


Inputs of nutrients

INDICATOR TYPE: Core
 INDICATOR CATEGORY: Pressure
 BSAP SEGMENT: Eutrophication
 MSFD CRITERIA: D5C1



Inputs of nutrients (nitrogen and phosphorus) to the sub-basins 1995-2021

Table of contents

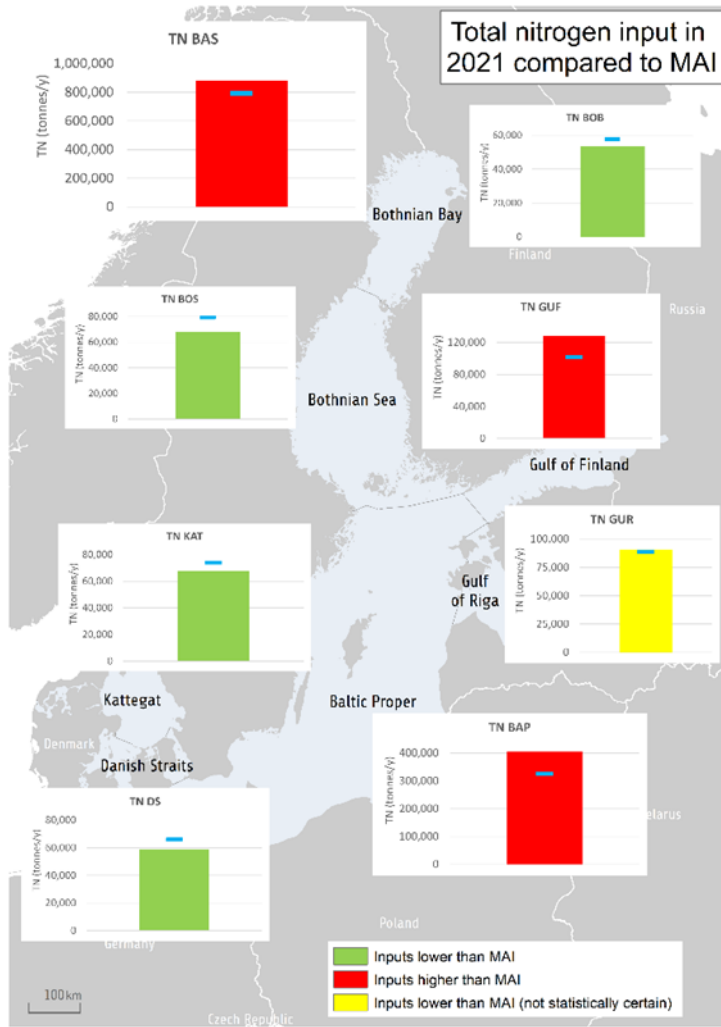
Inputs of nutrients (nitrogen and phosphorus) to the sub-basins 1995-2021.....	1
1 Key message.....	3
1.1 Citation	5
2 Relevance of the indicator	6
2.1 Ecological relevance	6
2.2 Policy relevance	8
2.3 Relevance for other assessments	12
3 Threshold values	13
3.1 Setting the threshold value(s) (method/reference/logic)	13
4 Results and discussion	15
4.1 Status assessment.....	15
4.2 Trends	19
4.3 Discussion text.....	31
5 Confidence.....	35
6 Drivers, Activities, and Pressures.....	36
7 Climate change and other factors	38

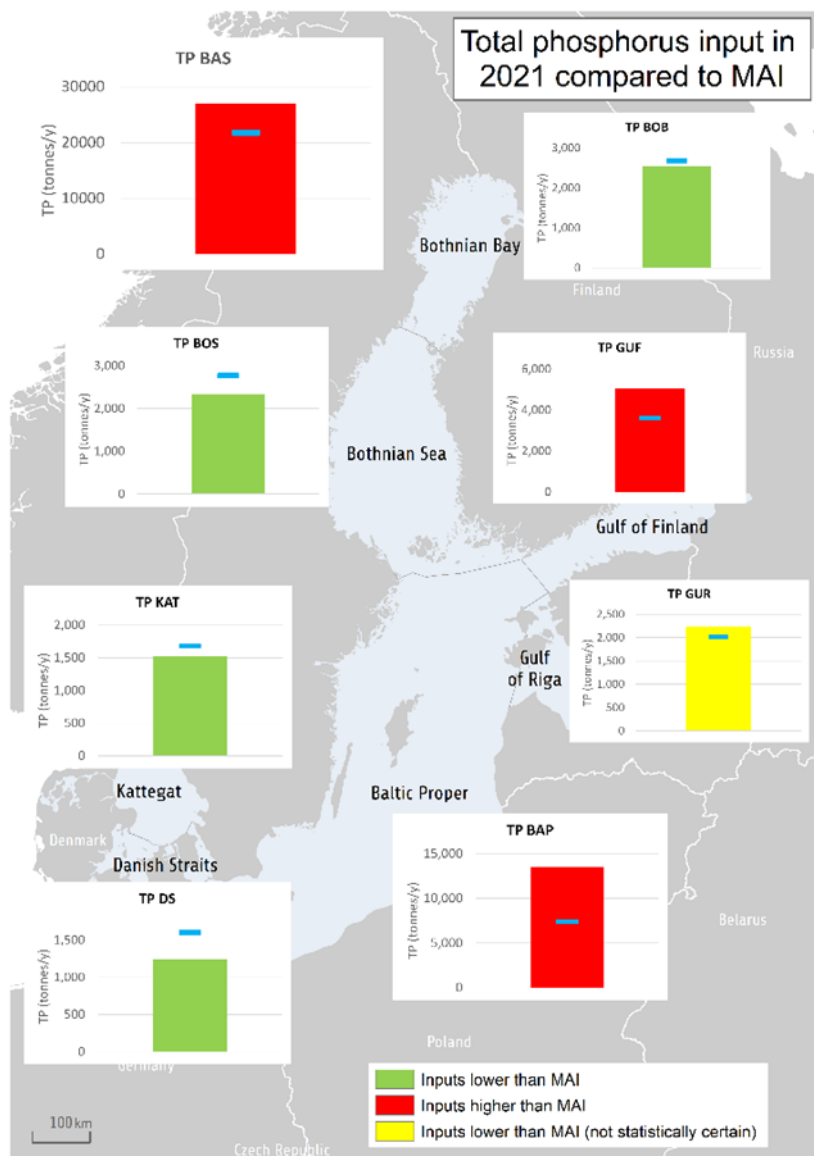
8 Conclusions	39
8.1 Future work or improvements needed	39
9 Methodology.....	40
9.1 Scale of assessment	40
9.2 Methodology applied	40
9.3 Monitoring and reporting requirements	42
10 Data	47
11 Contributors	51
12 Archive	52
13 References	53
14 Other relevant resources	56

1 Key message

A significant reduction of nutrients input has been achieved for the whole Baltic Sea. This assessment shows that the normalized total input of nitrogen¹ was reduced by 11% and phosphorus by 30% between the reference period (1997-2003) and 2021 (see results, section 4 and Results figure 1). In 2020 the corresponding reductions were 12% for total inputs of nitrogen and 30% for total phosphorus. The maximum allowable input (MAI) of nitrogen and phosphorus was fulfilled in the Bothnian Bay, Bothnian Sea, Danish Straits and Kattegat by 2021 (Key message figures 1 and Results tables 1a and 1b). In the Gulf of Riga, the fulfilment of MAI for nitrogen and phosphorus cannot be judged taking into account uncertainty on inputs. In Baltic Proper and Gulf of Finland MAI was not fulfilled for either total nitrogen or total phosphorus. The MAI indicate the maximal level of annual inputs of water- and airborne nitrogen and phosphorus to Baltic Sea sub-basins that can be allowed while still achieving good status in terms of eutrophication

¹ Total inputs of nitrogen and phosphorus are the sum of the respective waterborne inputs (which consists of riverine inputs and direct inputs (point sources discharging directly to the sea)) and airborne inputs. Nitrogen and phosphorus inputs include all fractions of these nutrients (dissolved, particulate, inorganic and organic).





Key message figure 1. Total input of nitrogen and phosphorus to each sub-basin (PLC divisions, see Methodology Section 9) and the whole Baltic Sea (BAS). Trend-based estimate of total nitrogen and phosphorus inputs in 2021 (tons per year) including statistical uncertainty are compared with the maximum allowable nutrient inputs (MAI t/y, shown as a blue line). Green colour indicates that estimated inputs including uncertainty during 2021 were lower than MAI, red colour indicates that inputs were higher, while yellow indicates that when taking into account the statistical uncertainty of input data it is not possible to determine whether MAI was fulfilled. *Note: the scales on the y-axes differ in the charts.*

1.1 Citation

HELCOM (2023) Inputs of nutrients to the sub-basins (2021). HELCOM core indicator report. Online. [Date Viewed], [Web link].

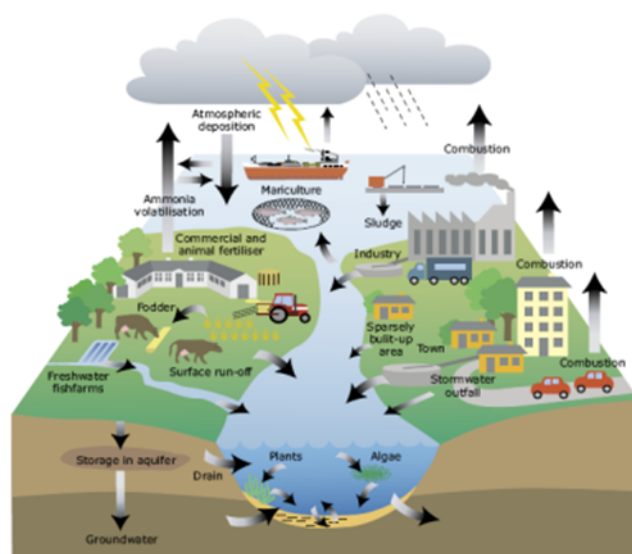
ISSN 2343-2543

2 Relevance of the indicator

2.1 Ecological relevance

Eutrophication in the Baltic Sea is to a large extent driven by excessive inputs of the nutrients nitrogen and phosphorus due to accelerating anthropogenic activities during the 20th century. Nutrient over-enrichment (or eutrophication) and/or changes in nutrient ratios in the aquatic environment cause elevated levels of algal and plant biomass, increased turbidity, oxygen depletion in bottom waters, changes in species composition and nuisance blooms of algae. In turn, such alterations can influence broader ecosystem functionality and structure, for example altered composition and energy flows in food webs.

The majority of nutrient inputs originate from anthropogenic activities on land and at sea. Waterborne inputs enter the sea via riverine inputs and direct discharges from coastal areas. The main sources of waterborne inputs are point sources (e.g. waste water treatment plants, industries and aquaculture), diffuse sources (agriculture, managed forestry, scattered dwellings, storm overflows etc.) and natural background sources. The main sectors contributing to atmospheric inputs are combustion in energy production and industry as well as transportation for oxidized nitrogen and agriculture for reduced nitrogen. A large proportion of atmospheric inputs originate from distant sources outside the Baltic Sea region. Emissions from shipping in the Baltic and North seas also contribute significantly to atmospheric inputs of nitrogen. In addition, excess nutrients stored in bottom sediments can enter the water column and enhance primary production of plants (Relevance figure 1).



Relevance figure 1. Different sources of nutrients to the sea and examples of nitrogen and phosphorus cycles. The flow related to ammonia volatilization shown in the figure applies only to nitrogen. In this report, also

combustion and atmospheric deposition deal only with nitrogen. Emissions of phosphorus to the atmosphere by dust from soils are not shown in the figure. (Source: Ærtebjerg et al. 2003)

Information on the quantity of nutrient inputs is of key importance in order to follow up the long-term changes in the nutrient inputs to the Baltic Sea. This information, together with information from land-based sources and retention within the catchment, is also crucial for determining the importance of different sources of nutrients for the pollution of the Baltic Sea as well as for assessing the effectiveness of measures taken to reduce the pollution inputs. Quantified input data is a prerequisite to interpret, evaluate and predict the state of the marine environment and related changes in the open sea and coastal waters.

State indicators linked to the pressure of nutrient inputs

Response in the eutrophication status from changes in nutrient inputs may be considerably slow. Model simulations indicate that it would take perhaps half a century or even more after nutrient inputs reach MAI to reach the environmental targets (Gustafsson, B.G & Mörth, C.M, document 2-43 HOD 41-2013). However, the simulations indicate that significant improvements could be expected after 1-2 decades. It should be noted that determination of these timescales is regarded as more uncertain than the ultimate long-term state because of unexpected non-linear responses of, e.g., phosphorus to improved oxygen concentrations. In coastal areas one can expect faster responses, especially when significant direct point sources are removed. This is probably also the case for the eastern part of the Gulf of Finland.

The effect of changes in nutrient inputs on the core HELCOM eutrophication status indicators DIN, DIP, chlorophyll-*a*, Secchi depth and oxygen debt are thoroughly evaluated in Gustafsson, B.G & Mörth, C.M, document 2-43 HOD 41-2013.

Relevant core indicators on eutrophication status can be found on the [HELCOM Indicators website](#):

[Total nitrogen](#)

[Total phosphorus](#)

[Total phosphorus Water transparency](#)

[Chlorophyll-*a*](#)

[Oxygen debt](#)

Information on other relevant supporting parameters (Baltic Sea Environment Factsheets):

[Cyanobacteria biomass 1990-2021](#)

[Cyanobacteria bloom index \(updated 2008\)](#)

[Impacts of invasive phytoplankton species on the Baltic Sea ecosystem \(updated 2009\)](#)

[Atmospheric nitrogen deposition to the Baltic Sea area in 2020](#)

[Nitrogen emissions to the air in the Baltic Sea area in 2020](#)

[Phytoplankton community composition \(updated 2015\)](#)

[Shifts in the Baltic Sea summer phytoplankton communities \(updated 2007\)](#)

[Spatial distribution of winter nutrient pool \(updated 2017\)](#)

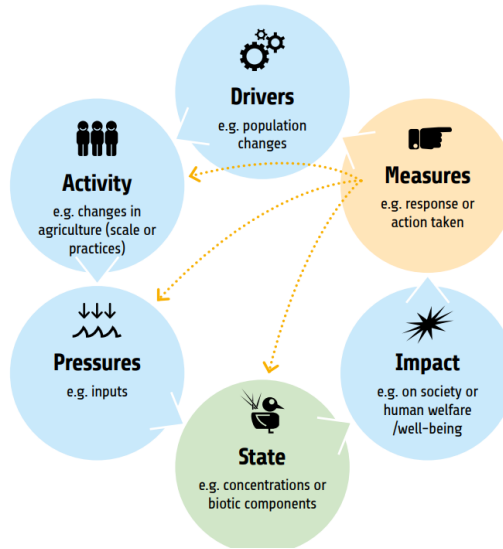
[Unusual phytoplankton event \(updated 2010\)](#)

[Bacterioplankton growth \(updated 2019\)](#)

2.2 Policy relevance

As a follow-up to the original Baltic Sea Action Plan (2007), a revised HELCOM nutrient reduction scheme was adopted in the 2013 HELCOM Ministerial Declaration (HELCOM 2013a) in which reduction requirements for nitrogen inputs to the Baltic Proper, Gulf of Finland and Kattegat and for phosphorus inputs to the Baltic Proper, Gulf of Finland and Gulf of Riga were set. The HELCOM nutrient reduction scheme defines maximum allowable inputs (MAI) of nutrients, which indicate the maximum level of inputs of water- and airborne nitrogen and phosphorus to Baltic Sea sub-basins that can be allowed in order to obtain good status in terms of eutrophication. This core indicator presents progress in the different Baltic Sea sub-basins towards reaching these maximum annual nutrient inputs levels. The updated Baltic Sea Action Plan 2021 reconfirmed the MAIs and their achievement for all sub-basins as the key prerequisite for achieving the ecological objective of a Baltic Sea unaffected by eutrophication and contains measures to track and assess the progress towards maximum allowable inputs (HELCOM 2021).

The progress of countries in reaching their share of the country-wise allocation of nutrient reduction targets is assessed separately in a follow-up system based on nutrient input ceilings (NIC) country per Baltic Sea sub-basins, as included in the updated BSAP (HELCOM, 2021). Relevance figure 2 illustrates how the nutrient reduction scheme fits into the HELCOM causal framework DAPSIM, providing a conceptual management framework through which key elements can be detailed and evaluated. Setting individual indicators (or components of indicators) within a causal framework support the BSAP by providing additional information that can facilitate the follow up on how actions and measures impact on other socioeconomic and state variables (HELCOM 2020).



Relevance figure 2. The conceptual approach for a HELCOM causal framework – DAPSIM with drivers, activities, pressures, state, impact and measures. Here the quantitative targets of MAI and Nutrient Input Ceilings country by sub-basin are within the Pressures.

Reducing the effects of human-induced eutrophication is the stated goal of Descriptor 5 in the EU Marine Strategy Framework Directive (MSFD). The indicator is an important part in following up the effectiveness of the measures taken to achieve GES under this Descriptor. Inputs of nutrients to the Baltic Sea marine environment have an effect on the nutrient levels under Descriptor 5 Criterion 1. It is important to note that this pressure indicator on inputs of nutrients relates to HELCOM eutrophication state core indicators. More information on this is provided in the section below on Environmental Targets and progress towards GES.

The information provided in this pressure indicator also supports follow-up of the effectiveness of measures implemented under the following agreements, as each of them addresses reduction in nutrient inputs in some way or other: EU Nitrates Directive; EU Urban Waste-Water Treatment Directive; EU Industrial Emissions Directive, IED; EU Water Framework Directive, WFD; the Gothenburg Protocol to Abate Acidification, Eutrophication and Ground-level Ozone under UNECE Convention on Long-range Transboundary Air pollution (CLRTAP); EU NEC Directive (2016/2284/EU); IMO designation of the Baltic Sea as a "special area" for passenger ships under MARPOL (International Convention for the Prevention of Pollution from Ships) Annex IV (on sewage from ships); EC Directive 2000/59/EC on port reception facilities; and the Application of the Baltic Sea NOx emission control area (NECA).

An overview of key policy aspects or direct relevance is provided in Relevance Table 1.

Relevance Table 1. Overview of key policy relevance for this indicator.

	Baltic Sea Action Plan (BSAP)	Marine Strategy Framework Directive (MSFD)
Fundamental link	<p>Segment: Eutrophication</p> <p>Goal: Baltic Sea unaffected by eutrophication</p> <p>Ecological objectives: “Concentrations of nutrients close to natural levels”, “Clear waters”, “Natural level of algal blooms”, “Natural distribution and occurrence of plants and animals”, and “Natural oxygen levels”. Management objective: “Minimize inputs of nutrients from human activities”</p> <p>Segment: Sea-based activities</p> <p>Management objective: “Minimize the input of nutrients, hazardous substances and litter from sea-based activities”</p> <p>The achievement of regional nutrient input targets – Maximum Allowable Inputs (MAI) and Nutrient Input Ceilings (NIC) – for all sub-basins, as identified in this BSAP, is the key prerequisite for achieving the ecological objectives.</p>	<p>Descriptor 5 Human-induced eutrophication is minimised, especially adverse effects thereof, such as losses in biodiversity, ecosystem degradation, harmful algae blooms and oxygen deficiency in bottom waters - Macrofaunal communities of benthic habitats.</p> <p>Criteria 1 Nutrient concentrations are not at levels that indicate adverse eutrophication effects. The threshold values are as follows: (a) in coastal waters, the values set in accordance with Directive 2000/60/EC; (b) beyond coastal waters, values consistent with those for coastal waters under Directive 2000/60/EC. Member States shall establish those values through regional or subregional cooperation</p> <p>Feature – Eutrophication. Element of the feature assessed – Transparency.</p>
Complementary link		<p>Descriptor 5 Human-induced eutrophication is minimised, especially adverse effects thereof, such as losses in biodiversity, ecosystem degradation, harmful algae blooms and oxygen deficiency in bottom waters - Macrofaunal communities of benthic habitats.</p> <p>Criteria 2 Chlorophyll a concentrations are not at levels that indicate adverse effects of nutrient enrichment. The threshold values are as follows: (a) in coastal waters, the values set in accordance with Directive 2000/60/EC; (b) beyond coastal waters, values consistent with those for coastal waters under Directive 2000/60/EC. Member States shall establish those values through regional or subregional cooperation.</p>

		<p>Criteria 3 The number, spatial extent and duration of harmful algal bloom events are not at levels that indicate adverse effects of nutrient enrichment.</p> <p>Criteria 4 The photic limit (transparency) of the water column is not reduced, due to increases in suspended algae, to a level that indicates adverse effects of nutrient enrichment. The threshold values are as follows: (a) in coastal waters, the values set in accordance with Directive 2000/60/EC; (b) beyond coastal waters, values consistent with those for coastal waters under Directive 2000/60/EC. Member States shall establish those values through regional or subregional cooperation. Feature – Eutrophication. Element of the feature assessed – Transparency.</p> <p>Criterion 5 The concentration of dissolved oxygen is not reduced, due to nutrient enrichment, to levels that indicate adverse effects on benthic habitats (including on associated biota and mobile species) or other eutrophication effects. The threshold values are as follows: in coastal waters, the values set in accordance with Directive 2000/60/EC; beyond coastal waters, values consistent with those for coastal waters under Directive 2000/60/EC. Member States shall establish those values through regional or subregional cooperation. Feature – Eutrophication. Element of the feature assessed – Dissolved oxygen.</p>
<p>Other relevant legislation:</p>	<p>EU Nitrates Directive; EU Urban Waste-Water Treatment Directive; Industrial Emissions Directive (IED), Water Framework Directive, WFD; the Gothenburg Protocol to Abate Acidification, Eutrophication and Ground-level Ozone under UNECE Convention on Long-range Transboundary Air pollution (CLRTAP);); EU NEC Directive (2016/2284/EU); Water Code of Russian Federation; Federal Act on the internal maritime waters, territorial sea and contiguous zone of the Russian Federation; IMO designated the Baltic Sea as a "special area" for passenger ships under MARPOL (International Convention for the Prevention of Pollution from Ships) Annex IV (on sewage from ships); EC Directive 2000/59/EC on port reception facilities; NOx emission control areas (NECA) in the Baltic and North seas designated by IMO.</p>	

	UN Sustainable Development Goal 14 (Conserve and sustainably use the oceans, seas and marine resources for sustainable development) is most clearly relevant, though SDG 12 (Ensure sustainable consumption and production patterns) and 13 (Take urgent action to combat climate change and its impacts) also have relevance.
--	--------------------------------------------------------------------------------------------------------------------------------------------------------------------------------------------------------------------------------------------------------------------------------------------------------------------------------

2.3 Relevance for other assessments

Human activities affecting the status of the marine environment are assessed using several indicators and spatial data on pressures. Each indicator focuses on one important aspect of the complex issue. In addition to providing an indicator-based evaluation of the nutrient inputs to the marine environment, this indicator also contributes to the holistic assessments of the Baltic Sea (HOLAS) with its newest assessment in 2023 and the State of the Baltic Sea report.

3 Threshold values

Environmental Target and progress towards good status

The environmental targets for nutrient inputs are the maximum allowable inputs (MAI) of the HELCOM nutrient reduction scheme (Thresholds table 1), as confirmed in the 2021 BSAP ([page 22](#)). The MAI indicate the maximal level of annual inputs of water- and airborne nitrogen and phosphorus to Baltic Sea sub-basins that can be allowed while still achieving good status in terms of eutrophication.

A provisional nutrient reduction scheme was adopted in the original HELCOM Baltic Sea Action Plan (HELCOM 2007). The presented MAI were revised based on an improved scientific basis and models and were adopted by the 2013 HELCOM Copenhagen Ministerial Meeting (HELCOM 2013a). The MAI of 2013 have been incorporated in the updated BSAP that was adopted in 2021 (HELCOM, 2021).

Thresholds table 1. Maximum allowable annual inputs (MAI) of nitrogen and phosphorus to the Baltic Sea sub-basins.

Baltic Sea Sub-basin	Maximum allowable annual nitrogen inputs (tonnes)	Maximum allowable annual phosphorus inputs (tonnes)
Bothnian Bay	57 622	2 675
Bothnian Sea	79 372	2 773
Baltic Proper	325 000	7 360
Gulf of Finland	101 800	3 600
Gulf of Riga	88 417	2 020
Danish Straits	65 998	1 601
Kattegat	74 000	1 687
Baltic Sea	792 209	21 716

3.1 Setting the threshold value(s) (method/reference/logic)

MAI was calculated by the Baltic Nest institute (BNI), Sweden, using the coupled physical-biogeochemical model [BALTSEM](#). Obtaining MAI is formally an optimization problem: finding the highest possible input levels (targets) that will still satisfy given eutrophication status (e.g. threshold values for eutrophication status indicators).

The basin-wise MAI were obtained by satisfying all eutrophication targets in all basins, taking into account ecological relevance and model accuracy. More details are provided in Gustafsson, B.G & Mörth, C.M, 2013 (document 2-43 HOD 41-2013).

For basins without additional reduction requirements, the 1997-2003 averaged normalized inputs obtained within the [PLC 5.5 project](#) are used as MAI. For more information, see HELCOM 2013b.

The uncertainty in the determination of MAI can be divided into three sources: uncertainty in the eutrophication targets, uncertainties associated with model short-comings and uncertainties in the input data to the calculation. The confidence in the eutrophication targets has been classified as moderate or high, depending on the parameter (HELCOM 2013c). It is straightforward but laborious to explore how MAI varies with changes in target values from the pressure-response relationships (i.e., the model derived change in target values for a given change in nutrient inputs). The laborious aspect arises from the numerous combinations of uncertainty that can arise if many indicator values and basins are simultaneously considered. However, the impression is that the nitrogen target causes the largest uncertainty in determination of MAI for most basins. Reasons are that in most cases there are no, or only few, trustworthy measurements to indicate the pre-eutrophied situation and also because the relationship between nitrogen input and concentrations in sea waters is rather weak in basins featuring hypoxia and strong nitrogen limitations (i.e. the Baltic Proper and the Gulf of Finland) because of large internal feedback from nitrogen fixation and denitrification.

When calculating MAI, attempts have been made to take into account biases in BALTSEM by discarding indicators in basins where they are not adequately modelled, and by raising a concern of whether MAI is really trustworthy because of model deficiency/bias.

Note: both MAI and nutrient input ceilings (NIC) calculations are affected by the input data to the model. If input data are inconsistent, it may cause over- or underestimation of MAI and NIC, and thus an unfair distribution of reduction requirements between countries.

4 Results and discussion

The results of the indicator evaluation that underly the key message map and information are provided below.

4.1 Status assessment

Fulfilment of MAI in 2021 and progress since the reference period (1997-2003)

According to the revised HELCOM nutrient reduction scheme adopted in the 2013 HELCOM Ministerial Declaration (HELCOM 2013a) reduction requirements were set for nitrogen inputs to the Baltic Proper, Gulf of Finland and Kattegat and for phosphorus inputs to Baltic Proper, Gulf of Finland and Gulf of Riga.

The Kattegat is the only sub-basin out of three with set reduction targets for nitrogen inputs where the input was significantly below MAI in 2021 (Key messages figure 1 and Results table 1a). However, since the reference period (1997-2003), a statistically significant reduction of nitrogen input has been achieved to all sub-basins except the Gulf of Finland and Gulf of Riga, where no reduction has been observed (Results figure 1). The highest observed input reduction was to Kattegat (26 %), Bothnian Sea (23%), and Danish Straits (22%), the lowest to the Baltic Proper (10%) (Results figure 1). Nitrogen inputs to the entire Baltic Sea have been reduced by 11% since the reference period.

None of the 3 sub-basins for which reduction targets for phosphorus inputs were set, the Baltic Proper, Gulf of Finland and Gulf of Riga, fulfilled the requirements in 2021 (Key message figure 1 and Results table 1b). However, statistically significant reductions have been achieved in all sub-basins since the reference period. The highest input reductions since the reference period (1997-2003) were achieved in the Gulf of Finland (48%), Gulf of Riga (29%) and Baltic Proper (25%) (Results figure 1). Phosphorus inputs to the entire Baltic Sea have been reduced by 30% since the reference period, and more than 70% of this reduction is due to reduced phosphorus inputs to the Gulf of Finland and Baltic Proper.

Results table 1a and b. The trend-based estimate for normalized annual inputs of (a) nitrogen and (b) phosphorus during 2021.

The table also contains data on statistical uncertainty, the remaining reduction needed to reach MAI and inputs in 2021 including statistical uncertainty in percentages of MAI. Classification of achieving MAI is given in colours: green=MAI fulfilled, yellow= fulfilment is not determined due to statistical uncertainty, and red=MAI not fulfilled. (Units in columns 2-5: tonnes per year). NOTE: For consistency with MAI no rounding (to tenth, hundreds or thousands) has been performed in the indicator.

Table 1a.

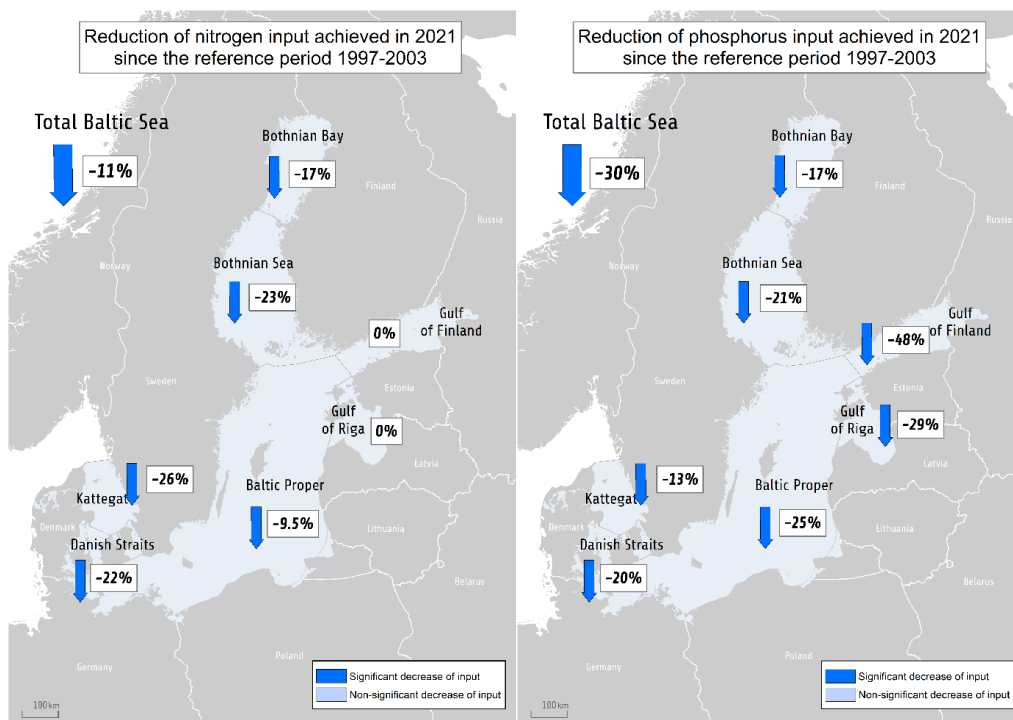
Baltic Sea Sub-basin	MAI*	N input 2021	Statistical uncertainty 2021	N input including statistical uncertainty 2021	Exceedance of MAI in 2021	Input 2021 including statistical uncertainty in % of MAI	Classification of achieved reduction
Bothnian Bay (BOB)	57 622	52 084	1 623	53 707		93	Green
Bothnian Sea (BOS)	79 372	66 043	2 071	68 115		86	Green
Baltic Proper (BAP)	325 000	395 997	8 226	404 223	79 223	124	Red
Gulf of Finland	101 800	119 973	8 236	128 209	26 409	126	Red
Gulf of Riga (GUR)	88 417	87 593	3 174	90 767	2 350	103	Yellow
Danish Straits (DS)	65 998	57 224	1 816	59 040		89	Green
Kattegat (KAT)	74 000	65 476	2 676	68 152		92	Green
Baltic Sea (BAS)	792 209	861 434	21 571	883 004	90 795	111	Red

Table 1b.

Baltic Sea Sub-basin	MAI*	P input 2021	Statistical uncertainty 2021	P input including statistical uncertainty 2021	Exceedance of MAI in 2021	Input 2021 including statistical uncertainty in % of MAI	Classification of achieved reduction
Bothnian Bay (BOB)	2 675	2 385	155	2 540		95	Green
Bothnian Sea (BOS)	2 773	2 215	107	2 322		84	Green
Baltic Proper (BAP)	7 360	12 712	785	13 497	6 137	183	Red
Gulf of Finland	3 600	4 266	774	5 040	1 440	140	Red
Gulf of Riga (GUR)	2 020	2 006	237	2 243	223	111	Yellow
Danish Straits (DS)	1 601	1 175	60	1 235		77	Green
Kattegat (KAT)	1 687	1 486	42	1 528		91	Green
Baltic Sea (BAS)	21 716	25 732	1 258	26 990	5 274	124	Red

*As adopted by the 2013 HELCOM Copenhagen Ministerial Meeting (HELCOM 2013a) and in BSAP update 2021 (HELCOM, 2021)

Compared to the first evaluation of MAI fulfilment (Svendsen et al. 2015), in 2016 EMEP revised the modelled nitrogen air deposition to the Baltic Sea for 1995-2012. This resulted in an increase of the annual deposition to the Baltic Sea of 16 to 23%. The increase of annual nitrogen deposition to the individual sub-basins was between 9 and 27 %. In the following years, the EMEP deposition model was updated after the second MAI assessment (HELCOM, 2018). The update mainly concerned changing of the deposition grid resolution from 50km*50km to 0.1°*0.1° (approx. 11km*6km grid for Baltic Sea latitudes). The higher resolution was applied for computation of the annual nitrogen deposition 2000-2017, and for the present MAI assessment 1995- 2021. Also, the whole time series of nitrogen emission data is updated annually, and, for years since 2000, data from FMI on ship emissions have replaced former ships emission data in the deposition calculation. For this year's assessment, emission data was reported for 1990-2021, and nitrogen deposition was accordingly calculated by EMEP MSC-W for 1990-2021 (Gauss et al., 2023). The update of the model, use of revised reported emission data, and use of weather data in the normalization procedure (section “Airborne Inputs” under chapter “Data and updating”) resulted in markedly changed deposition data compared the first two MAI assessments. Deposition on the Baltic Sea in the reference period (1997-2003) was 292 000 tons nitrogen in the latest EMEP estimate, compared to 227 000 tons nitrogen previously estimated, or 29% higher than calculated for the BSAP 2013. The nitrogen deposition in the reference period showed the highest increase in the Gulf of Finland (34%) and Kattegat (38%) and the lowest in the Gulf of Riga (17%).



Results figure 1. Reductions of total annual inputs of nitrogen (left) and phosphorus (right) achieved in 2021 since the reference period 1997-2003 (in %). The annual inputs in 2021 and in the reference period were calculated using normalized annual data. The arrows indicate decreasing (↓) inputs, while the colours indicate if the change was statistically significant.

Changes in total inputs of nitrogen and phosphorus since the reference period are calculated based on the average normalized inputs in the reference period and the estimated inputs in 2021, resulting from the analysis of long-term trends (1995-2021) (Larsen & Svendsen, 2021). Based on the updated modelled annual nitrogen deposition in 2021 there was a significant reduction since the reference period for all sub-basins. The overall reduction to the Baltic Sea in nitrogen deposition was 33%. For the sub-basins, the reduction was between 29 and 37%, and was highest for Kattegat and lowest for Gulf of Finland and Gulf of Riga.

Phosphorus deposition on the Baltic Sea is calculated as a fixed annual rate of 5 kg P per km² sea surface (see section “9.3 Monitoring methodology” of this indicator) during 1995-2021.

Reduction in atmospheric nitrogen deposition since the reference period contributes overall more than the corresponding waterborne nitrogen reductions to the reduction in total nitrogen inputs to the Baltic Sea (Results table 2). For Gulf of Finland and Gulf of Riga there were no significant reductions in the total waterborne nitrogen inputs, and for Baltic Proper there was a significant increase in these inputs. Only for Bothnian Bay and Kattegat airborne reduction had a share that was lower than approximately 50% of the total reductions in nitrogen inputs, with shares of 31 and 44%, respectively.

Results table 2. Significant reductions in airborne nitrogen deposition, waterborne and total nitrogen inputs (tons) in 2021, respectively, as compared with the reference period (1997-2003) for the Baltic Sea and basins of the Baltic Sea, and the airborne deposition share (%) of the reduction. 100% = there was no significant reduction in waterborne nitrogen inputs. Remark: Significant reductions have been tested separately for airborne, waterborne, and total (airborne + waterborne) TN inputs, and therefore sums of significant reductions on airborne and waterborne inputs will not necessarily add up to the significant reduction of the total nitrogen inputs. Correspondingly, the airborne shares have been scaled according to the reduction on total nitrogen inputs.

TN reductions	BOB	BOS	BAP	GUF	GUR	DS	KAT	BAS
Airborne (tons)	3 480	10 800	54 500	5 430	3 610	11 100	10 400	99 200
Waterborne (tons)	7 690	9 290	-14 300	-	-	8 660	13 100	39 900
Total TN inputs (tons)	11 100	19 900	44 900	9 590	-	15 600	23 000	123 000
Airborne reduction in % of total TN input reduction	31	54	100	100	100	56	44	71

4.2 Trends

Normalization is used for the annual riverine and atmospheric inputs to reduce the impact of inter-annual variations of the inputs caused by weather conditions (primarily variations in precipitation). With normalization, the comparability of the inter-annual inputs increases, facilitating trend detection and identification of effects of undertaken measures in the catchment areas (Larsen & Svendsen, 2021). Without normalization, the effects could be disguised by large natural annual variation of precipitation and river flow.

Trend analyses show a statistically significant reduction of total (water+airborne) inputs of nitrogen to the Baltic Sea amounting to 17 % from 1995 to 2021 (Results figure 2a). For the Baltic Sea and the sub-basins except the Gulf of Riga, one or two break points were identified when evaluating the trends of total nitrogen inputs, dividing the time series into two or three sections (see also results table 4a). The Baltic Sea and three sub-basins had significant reductions in total inputs of nitrogen from 1995 to the identified break point: Kattegat 28% (1995-2012), Danish Straits 22% (1995-2004) and no trend (2005-2014) between the first and the second break point, Baltic Proper 23% (1995-2002) and no trend (2003-2019) between the first and the second break point and Baltic Sea 21% (1995-2016). Only for Bothnian Sea (23%, 2003), Bothnian Bay (12%, breakpoint 2008), and Kattegat (6%, 2012) there were significant reductions after the respective break points. A significant nitrogen input **increase** was observed to Gulf of Finland (23%, 1995-2002) and to Bothnian Bay (9%, 1995-2008).

Trends for total phosphorus inputs to the Baltic Sea revealed a steady statistically significant reduction of 38% from 1995 to 2021 (Results figure 2b and results table 4b). Correspondingly, from 1995 to 2021 total inputs of phosphorus also showed a steady significant decrease to Gulf of Riga (34%), Baltic Proper (31%), Bothnian Sea (25%) and Bothnian Bay (20%). Break points were detected when evaluating the trend in the time series for the remaining three basins. For one of the three basins, there was a significant decrease in total inputs of phosphorus in the first section of the time series: Danish Straits 33% (1995-2000) and also a decrease after the break point (14%, 2001-2020). Two basins had a breakpoint whereafter total inputs of phosphorus on average were lower, but with no trend in the inputs for Gulf of Finland (48%, 2012), and Kattegat (15%, 2007). The marked abrupt reduction in total phosphorus inputs after 2011 for Gulf of Finland is probably connected to rapid changes of inputs due to measures on point sources in the Russian catchment. There was a marked reduction, despite large interannual variation preventing efficient flow normalization. This resulted in a high uncertainty in the total inputs of phosphorus to the Gulf of Finland (18% according to Results table 1b). In addition, the Gulf of Riga had a rather higher uncertainty on estimated phosphorus inputs in 2021 (12 %) compared with the remaining five sub-basins (3-7%). For estimated total inputs of

nitrogen in 2021 the uncertainty was also highest in the Gulf of Finland (7%), the uncertainty on inputs in the remaining sub-basins was between 2 and 4% (according to Results table 1a).

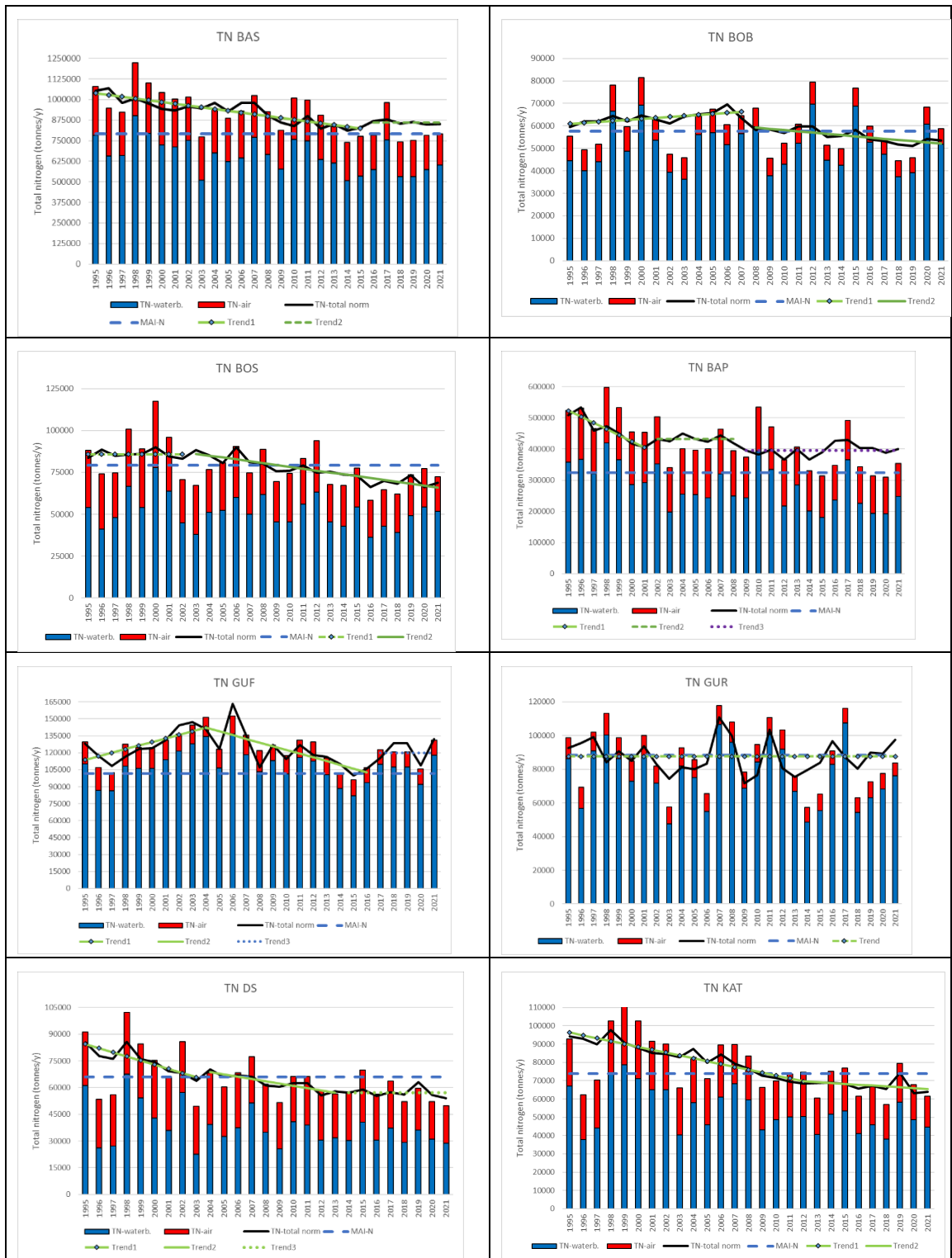
Trend analysis of the normalized timeseries of airborne inputs of nitrogen showed a significant decrease to the Baltic Sea and to the seven sub-basins from 1995 to 2021, between 37% (Gulf of Riga and Gulf of Finland) and 42% (the Kattegat) (Results figure 2c, Results table 3 and Results table 4a). For all basins except Danish Straits there are three break points: in 2003, 2009 and 2017; for Baltic Sea and Danish Straits only two: in 2009 and 2017. Before the first break point for the six basins with first break point in 2003 the average annual reduction in airborne deposition was 1.6% (Bothnian Bay and Baltic Proper) to 2.7 (Kattegat), increasing after the last break point in 2017 for all basin and Baltic Sea to 2.0 to 3.0% as annual average decrease.

Trend analysis of the normalized waterborne nitrogen inputs showed a significant decrease from 1995 to 2021 for the Baltic Sea and six basins (Results figures 2d, Results table 3 and Results table 4a). There was no significant decrease to the Gulf of Riga. There was one break point for Baltic Sea and four basins, and two break points for Baltic Proper and Gulf of Finland. No break points have been identified for the waterborne nitrogen inputs to Gulf of Riga. There were significant reductions in waterborne nitrogen inputs from 1995 to before the first break point to the Baltic Sea (16%, 2016), Baltic Proper (29%, 2002), Danish Straits (33%, 2014), the Kattegat (21%, 2011), and a significant increase for Gulf of Finland (33%, 2004), Bothnian Bay (14%, 2008) and Bothnian Sea (8.8%, 2003). There were no significant changes in inputs for Baltic Proper in the section of the time series between the two breakpoints (2003-2009) but and decrease for Gulf of Finland (29% between 2005-2017). For the last segment of the timeseries there were significant decreases in nitrogen inputs for two basins: Bothnian Bay (10%, 2009- 2021), and Bothnian Sea (20%, 2004-2021), and a significant increase for Baltic Proper (18%, 2010-2021). No trend in waterborne nitrogen inputs was detected in Kattegat (after 2011), Danish Straits (after 2014), Gulf of Finland (after 2017) and Baltic Sea (after 2016). The significant increase in waterborne nitrogen inputs since 1995 to the Gulf of Finland is also reflected in an increase in the corresponding total nitrogen inputs even though airborne deposition of nitrogen was decreasing in the same period.

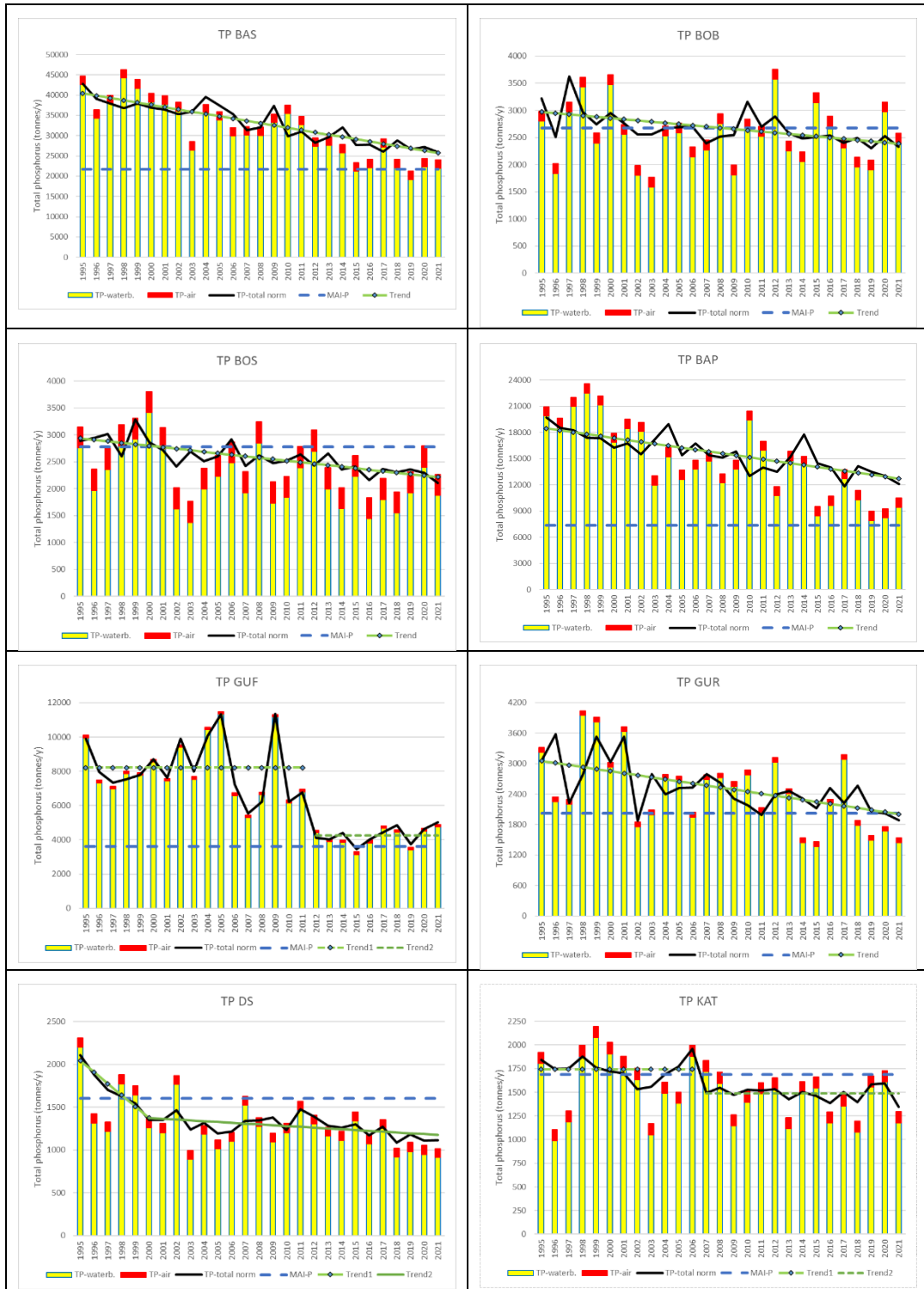
Testing for trends in flows indicated a significant decrease in flow to Baltic Proper (23% 1995 to 2021) and a significant increase in flow to Gulf of Finland (18% 1995-2021). These trends might have an impact on the trend evaluation in the waterborne inputs to the two sub-basins.

Trend analysis of the normalized waterborne phosphorus inputs showed a significant decrease from 1995 to 2021 to the Baltic Sea and the seven basins (Results figures 2e,

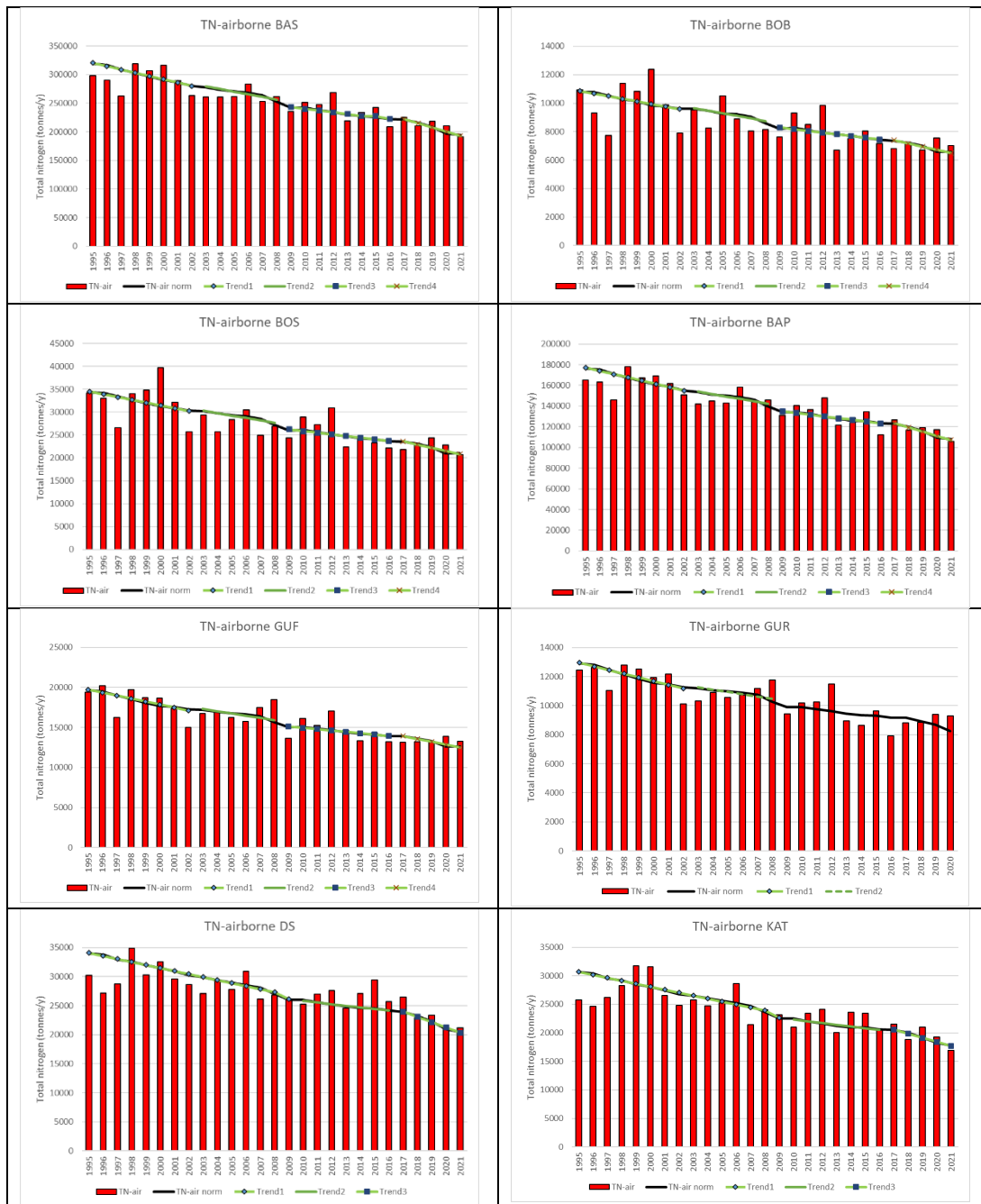
Results table 3 and Results table 4b). A breakpoint in the timeseries was identified for three basins: Danish Straits (2000), Gulf of Finland (2012) and Kattegat (2007). Only Danish Straits had significant reduction of 34% before the breakpoint (1995- 2000) and 16% after the breakpoint (2001-2021), and no trend for the remaining two basins. For Gulf of Finland and Kattegat there is a rather abrupt break point, resulting in markedly lower waterborne inputs after the breakpoint (48% for Gulf of Finland, and 15% for Kattegat). These abrupt jumps are often related to markedly improved wastewater treatment as occurred to Gulf of Finland around 2012, which is seen in Result Figure 3e as a marked reduction in direct point source inputs. From 1995 to 2021 the highest reduction in waterborne input was to Gulf of Finland (48%) and Danish Straits (42%), and the lowest reduction was found to Kattegat (15%) and Bothnian Bay (20%) (Results table 3 and result table 4b). The reduction to the Baltic Sea was 36%.



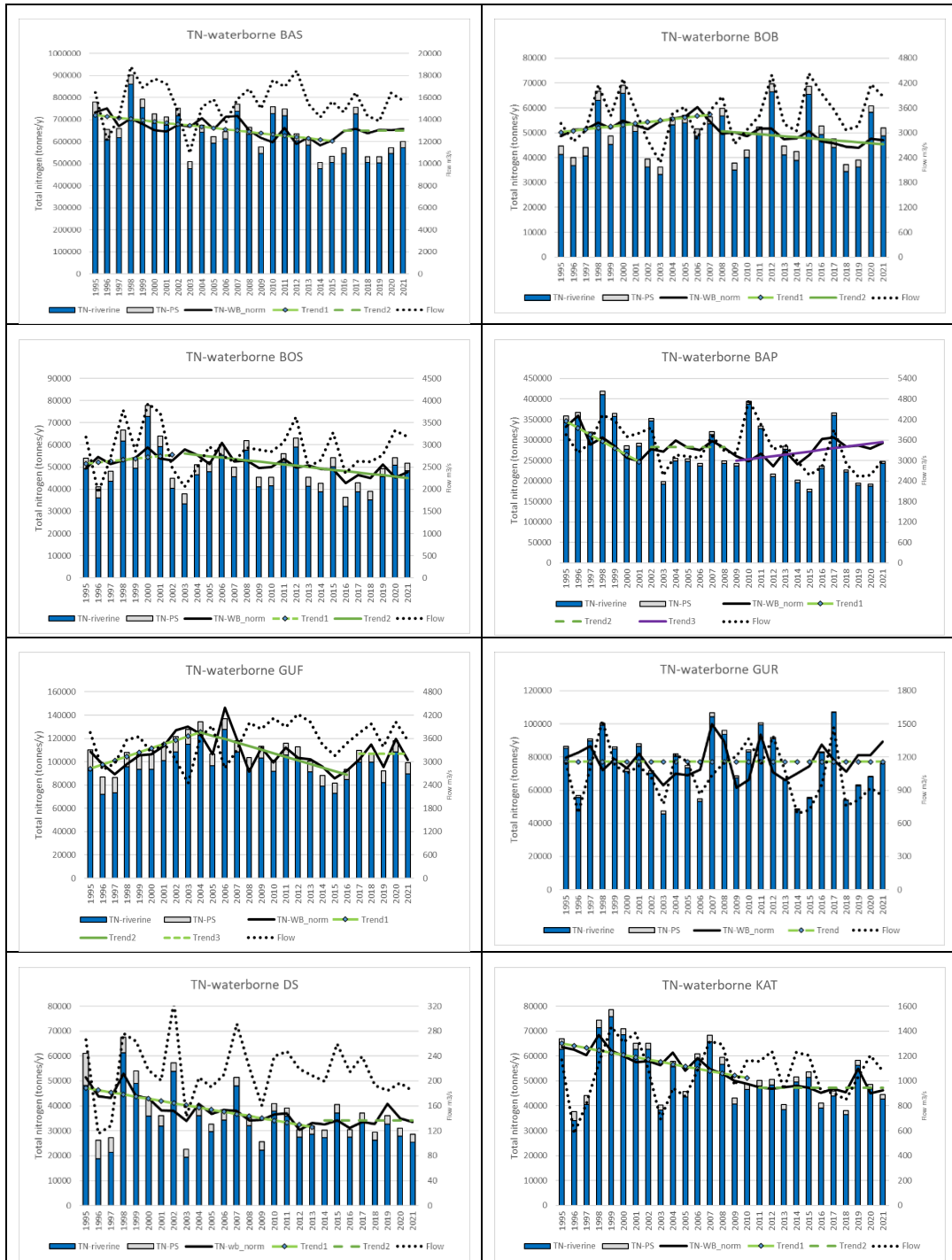
Results figure 2a. Actual total air- and waterborne annual input of nitrogen (TN) to the Baltic Sea and sub-basins from 1995 to 2021 (tonnes/y). The normalized total annual inputs of nitrogen are given as a black line. The trend line for normalized total nitrogen is given as a green line with markers. In cases when a break point divides the trend into two parts, the second part (called trend 2) is shown by a green line without marker. In cases with two break points the third part (called trend 3) is indicated as a green line. (Solid trend line shows statistically significant trend and dotted line no statistically significant trend). The MAI as adopted by the 2013 HELCOM Copenhagen Ministerial Meeting (HELCOM 2013a) is shown as the bold dotted blue li



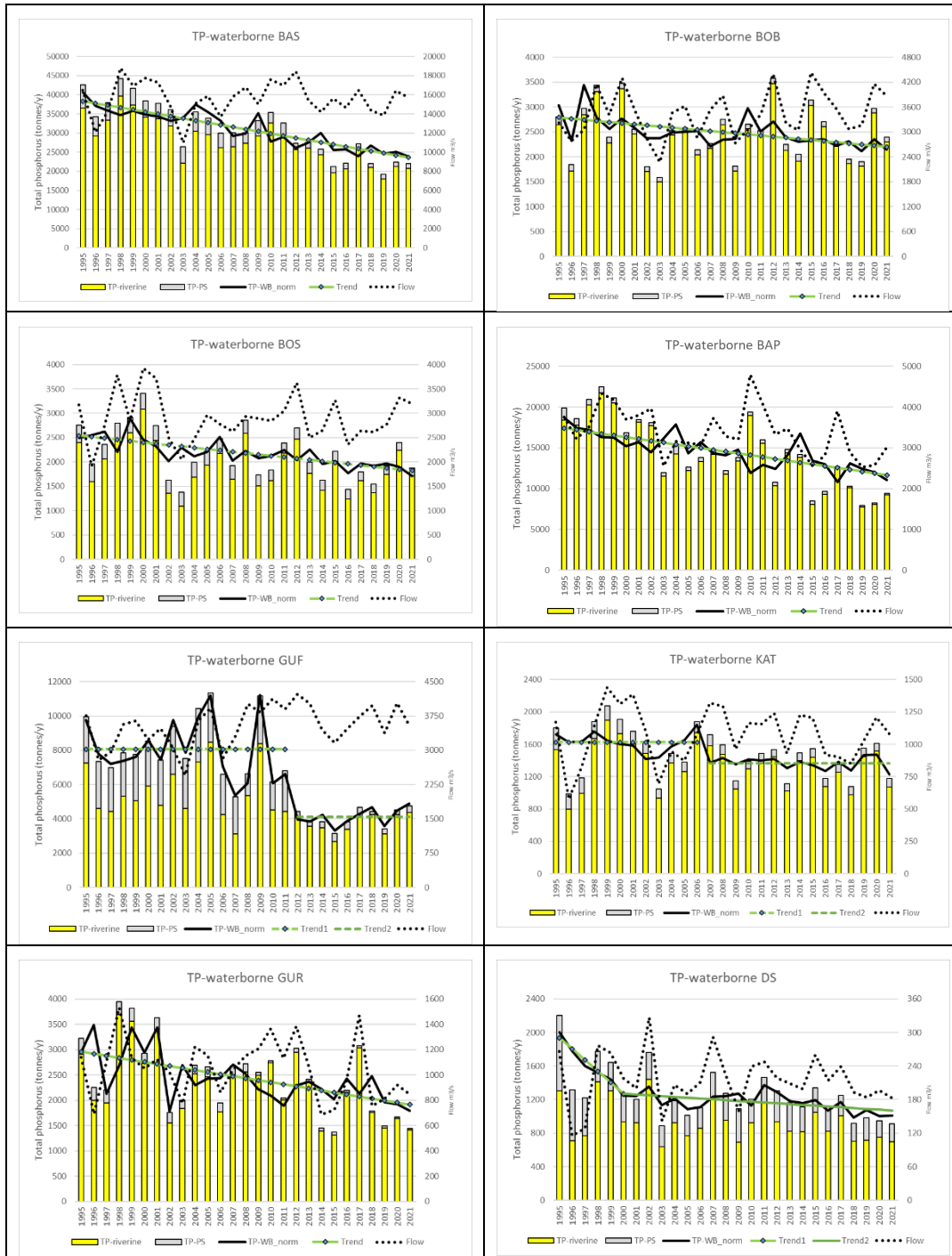
Results figure 2b. As figure Result 2a but for phosphorus (TP).



Results figure 2c. Actual annual airborne deposition of nitrogen (TN) to the Baltic Sea and sub-basins from 1995 to 2021 (tonnes/y). The normalized annual airborne deposition inputs of nitrogen are given as a black line. The trend line for normalized total nitrogen deposition is given as a green line with markers. In cases when a break point divides the trend into two parts, the second part (called trend 2) is shown by a green line without marker. In case with two or three break points divide the trend into three or four parts, respectively, the third and fourth part is shown as a green line with (different) markers. Solid trend line shows statistically significant trend and dotted line no statistically significant trend.



Results figure 2d. Actual annual riverine and direct point source inputs (the sum is the waterborne inputs) of nitrogen (TN) (tonnes/y) and total waterborne flow (m^3/s) to the Baltic Sea and sub-basins from 1995 to 2021. The normalized annual waterborne inputs of nitrogen are given as a black line. The trend line for normalized total nitrogen waterborne input is given as a green line with markers. In cases when a break point divides the trend into two parts, the second part (called trend 2) is shown by a green line without marker. In cases with two breaks points the third part (called trend 3) is indicated as a green line without marker. Solid trend line shows statistically significant trend and dotted line no statistically significant trend.



Results figure 2e. As figure Result 2d but for phosphorus (TP).

Results table 3 summarizes the significant trends in in time series 1995-2021 on airborne nitrogen inputs, and in waterborne nitrogen and phosphorus inputs as indicated in the evaluation of Results figure 2a to e. As atmospheric deposition of phosphorus was set as an annual fixed rate of 5 kg per km² the waterborne inputs determine changes in total phosphorus inputs to the Baltic Sea.

Tables 4a and b include an overview of the identified breakpoints in the 1995-2021

timeseries of airborne nitrogen deposition, and waterborne and total nitrogen and phosphorus inputs, respectively. Further, the tables include statistically significant changes in the section before first breakpoint and in the section after the last breakpoint (if break points are identified) and for the entire time series 1995-2021.

Results table 3. Changes in annual average normalized air- and waterborne and total nitrogen inputs and waterborne and total phosphorus inputs between 1995 and 2021 in percent. **Bold** indicates statistically significant changes. Note: For Gulf of Riga, airborne inputs constitute 10 to 15% of total nitrogen inputs – and the trend in airborne inputs is not strong enough to affect the trend for total nitrogen inputs to Gulf of Riga (see figure 2a, 2c and 2d for Gulf of Riga).

Baltic Sea Sub-basin	Changes in airborne N inputs since 1995 (%)	Changes in waterborne N inputs since 1995 (%)	Changes in total N inputs since 1995 (%)	Changes in waterborne P inputs since 1995 (%)	Changes in total P inputs since 1995 (%)
Bothnian Bay	-40	-9.4	-14	-21	-20
Bothnian Sea	-40	-13	-23	-28	-25
Baltic Proper	-40	-15	-24	-33	-31
Gulf of Finland	-37	13	5.5	-49	-48
Gulf of Riga	-37	0.0	0.0	-35	-34
Danish Straits	-40	-28	-32	-45	-42
Kattegat	-42	-27	-32	-16	-15
Baltic Sea	-40	-9.6	-17	-38	-36

Results table 4a. Identified **break** points and **significant** changes (in percentage) in normalized annual airborne, waterborne and total nitrogen inputs for the first and the last section of the time series 1995-2021, where one or more breakpoints have been identified, and significant changes from 1995 to 2021. “-” indicates no significant changes in inputs in that specific section of the time series. If there is no breakpoint in the time series from 1995 to 2021 columns “changes before first” and “changes after last section” are empty, and only the column “1995-2021” will include a number for significant change. Example. Baltic Proper TN waterborne: Breakpoints identified | 2002 and 2009. There is a 29 % significant reduction from 1995-2002 (before first) and significant increase of 18 % in the last section after 2009. There is a significant reduction of 15 % from 1995 to 2021.

	TN airborne			TN waterborne			Total TN input					
	Break-points	Change before first (%)	Change after last (%)	Change since 1995 (%)	Break-points	Change before first (%)	Change after last (%)	Change since 1995 (%)	Break-points	Change before first (%)	Change after last (%)	Change since 1995 (%)
Bothnian Bay	2003, 2009, 2017	-12	-12	-40	2008	14	-10	-9.4	2008	8.8	-12	-14
Bothnian Sea	2003, 2009, 2017	-20	-15	-40	2003	8.8	-20	-13	2003	-	-23	-23

Baltic Proper	2003, 2009, 2017	-13	-13	-40	2002, 2009	-29	18	-15	2002, 2009	-23	-	-24
Gulf of Finland	2003, 2009, 2017	-13	-10	-37	2004, 2017	33	-	13	2004, 2017	25	-	5.5
Gulf of Riga	2003, 2009, 2017	-14	-11	-37	-	-	-	-	-	-	-	-
Danish Straits	2003, 2009, 2017	-20	-15	-40	2014	-33	-	-28	2004, 2014	-22	-	-32
Kattegat	2003, 2009, 2017	-22	-14	-42	2011	-21	-	-27	2012	-28	-6.1	-32
Baltic Sea	2003, 2009, 2017	-13	-13	-40	2016	-16	-	-10	2016	-21	-	-17

Results table 4b. As table result 4a but for phosphorus. No columns included for atmospheric phosphorus deposition (as it is seen as a constant annual rate of 5 kg P km² sea surface for all basins during 1995-2021).

	TP waterborne				Total TP input			
	Breakpoints	Change (%) before first	Change (%) after last	Change (%) since 1995	Breakpoints	Change (%) before first	Change (%) after last	Change (%) since 1995
Bothnian Bay				-21				-20
Bothnian Sea				-28				-25
Baltic Proper				-33				-31
Gulf of Finland	2012	-	-	-49	2012	-	-	-48
Gulf of Riga				-35				-34
Danish Straits	2000	-34	-16	-45	2000	-33	-14	-42
Kattegat	2007	-	-	-16	2007	-	-	-15
Baltic Sea				-38				-38

Actual airborne and waterborne inputs in 2021

Total nutrient input to the Baltic Sea varies significantly depending on wet or dry weather conditions. For example, 2010 was a very wet year in the southern part of the Baltic Sea catchment area, hence the actual (non-normalized) nutrient inputs were very high to e.g., Baltic Proper (Results figure 2) and relatively high to the whole Baltic Sea. Additionally, atmospheric deposition was also rather high in 2010.

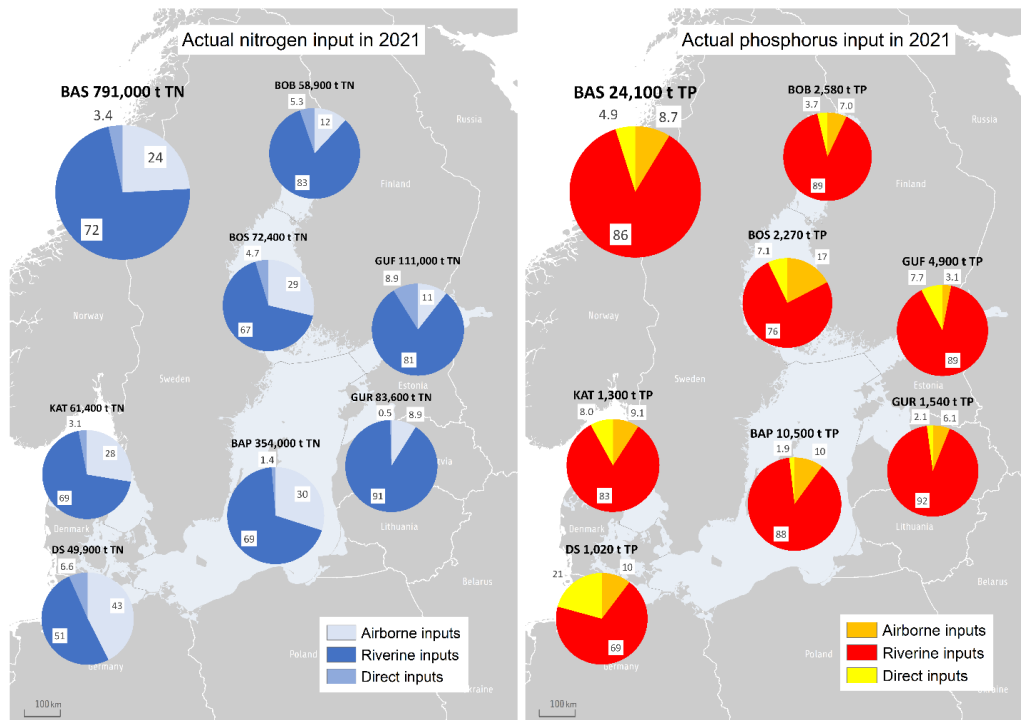
In 2021 flow was higher than average to the Baltic Sea (5.3 % above average 1995-2020).

Flow was higher than average to Bothnian Bay (22%), Bothnian Sea (15%), Gulf of Finland (14%) and Kattegat (12%) and lower than average to Baltic Proper (24%), Gulf of Riga (13%) and Danish Straits (9%) (Results table 5). This is more or less the same flow pattern as in 2020 for the entire Baltic Sea and its basins. Actual nitrogen inputs were overall relatively high particularly to the Bothnian Bay and Gulf of Finland and for total phosphorus to Bothnian Bay. Actual nutrient inputs were relatively low to the Danish Straits and for phosphorus also to Gulf of Riga.

Actual total input of nitrogen in 2021 was about 791 000 tonnes, which is the seventh lowest yearly inputs during 1995-2021. As in 2020 parts of the Baltic Sea catchment, 2021 was wet in the catchments of the Bothnian Bay, Bothnian Sea, Gulf of Finland and parts of Kattegat, but precipitation was lower overall than average in the southern and southwestern catchments to the Baltic Sea. Atmospheric deposition constituted about 24% of total nitrogen inputs in 2021, the main pathway for nitrogen inputs to the Baltic Sea was via rivers (73%). The share of direct inputs (point sources discharging directly into the sea) of nitrogen was low and on average only about 3%. The total phosphorus input to the Baltic Sea in 2021 was about 24 100 tonnes, with a contribution of atmospheric deposition by about 9% (Results table 5 and Results figure 3). The main pathway for phosphorus was also via rivers (86%). Direct inputs of phosphorus constituted on average 5% but had a significantly higher share to some basins, for example to Danish Straits(21%).

Results table 5. Annual average water flow ($\text{m}^3 \text{s}^{-1}$) as well as actual annual waterborne and airborne inputs of phosphorus (tonnes) and nitrogen to the Baltic Sea sub-basins in 2021. Average flow 1995-2020 is shown for comparison.

Sub-basin	Average flow 1995-2020 (m^3/s)	Flow 2021 (m^3/s)	Nitrogen 2021 (tonnes)			Phosphorus 2021 (tonnes)		
			Waterborne	Airborne	Total	Waterborne	Airborne	Total
Bothnian Bay	3 429	4 165	51 834	7 020	58 854	2 394	181	2 575
Bothnian Sea	2 884	3 326	51 625	20 743	72 368	1 873	394	2 267
Baltic Proper	3 404	2 572	247 947	105 925	353 873	9 433	1 046	10 479
Gulf of Finland	3 537	4 036	99 344	11 783	111 127	4 746	150	4 896
Gulf of Riga	1 057	922	76 210	7 424	83 634	1 442	93	1 535
Danish Straits	216	196	28 691	21 229	49 921	911	105	1 016
Kattegat	1 075	1 207	44 492	16 950	61 442	1 176	118	1 295
Total	15 602	16 424	600 143	191 075	791 218	21 975	2 088	24 063



Results figure 3. The actual inputs of riverine, direct (point sources discharging directly into the sea) and airborne nitrogen (left) and phosphorus (right) to the Baltic Sea in 2021.

Comparing MAI assessments 2015-2021

The classification of achieved reductions in the MAI assessment 2015-2021 are very consistent for both nitrogen and phosphorus (Results table 6a and 6b).

Maximum allowable nitrogen inputs were fulfilled in three basins (Bothnian Sea, Danish Straits and Kattegat) in the seven annual assessments (2015-2021). MAI was not fulfilled for Baltic Proper, Gulf of Finland and for the Baltic Sea in any assessment. MAI was not fulfilled in the Gulf of Riga in 2016-2019. For Bothnian Bay (2015-2017) and Gulf of Riga (2015, 2020 and 2021), due to statistical uncertainty on inputs, MAI fulfilment could not be judged, but in 2018-2021 MAI was fulfilled for Bothnian Bay. Bothnian Bay has improved its classification since 2015.

Maximum allowable phosphorus inputs were only fulfilled in Kattegat for the seven assessments (2015-2021). For Bothnian Sea and Danish Straits MAI has been fulfilled since 2016, but in 2015 fulfilment could not be judged due to statistical uncertainty on inputs. MAI was not fulfilled in Baltic Proper, and for the Baltic Sea in any assessment. MAI was not fulfilled in Gulf of Finland in 2015, 2017 and 2019-2021. MAI was not fulfilled in Gulf of Riga 2015-2020 but in 2021 fulfilment could not be judged due to statistical uncertainty on inputs. For Bothnian Bay (2015-2017) and Gulf of Finland (2016 and 2018) MAI fulfilment could not be judged due to statistical uncertainty on inputs. High uncertainty on the inputs to Gulf of Finland is one reason for the changing status of fulfilment of MAI. In 2018-

2021 MAI was fulfilled for Bothnian Bay. Bothnian Bay, Bothnian Sea and Danish Straits have improved their classification since 2015.

Result table 6a. Classification of achieving MAI in 2015 (1995-2015 data), 2016 (1995-2016 data), 2017 (1995-2017 data), 2018 (1995-2018 data), 2019 (1995-2019), 2020 (1995-2020) and 2021 (1995-2021) for nitrogen: green=MAI fulfilled, yellow= fulfilment is not determined due to statistical uncertainty, and red=MAI not fulfilled

Baltic Sea Sub-basin	Classification of achieved reduction of TN						
	TN2015	TN2016	TN2017	TN2018	TN2019	TN2020	TN 2021
Bothnian Bay	Yellow	Yellow	Yellow	Green	Green	Green	Green
Bothnian Sea	Green	Green	Green	Green	Green	Green	Green
Baltic Proper	Red	Red	Red	Red	Red	Red	Red
Gulf of Finland	Red	Red	Red	Red	Red	Red	Red
Gulf of Riga	Yellow	Red	Red	Red	Red	Yellow	Yellow
Danish Straits	Green	Green	Green	Green	Green	Green	Green
Kattegat	Green	Green	Green	Green	Green	Green	Green
Baltic Sea	Red	Red	Red	Red	Red	Red	Red

Result table 6b. Classification of achieving MAI in 2015 (1995-2015 data), 2016 (1995-2016 data), 2017 (1995-2017 data), 2018 (1995-2018 data), 2019 (1995-2019), 2020 (1995-2020) and 2021 (1995-2021) for phosphorus: green=MAI fulfilled, yellow= fulfilment is not determined due to statistical uncertainty, and red=MAI not fulfilled

Baltic Sea Sub-basin	Classification of achieved reduction of TP						
	TP2015	TP2016	TP2017	TP2018	TP2019	TP2020	TP2021
Bothnian Bay	Yellow	Yellow	Yellow	Green	Green	Green	Green
Bothnian Sea	Yellow	Green	Green	Green	Green	Green	Green
Baltic Proper	Red	Red	Red	Red	Red	Red	Red
Gulf of Finland	Red	Yellow	Red	Yellow	Red	Red	Red
Gulf of Riga	Red	Red	Red	Red	Red	Red	Yellow
Danish Straits	Yellow	Green	Green	Green	Green	Green	Green
Kattegat	Green	Green	Green	Green	Green	Green	Green
Baltic Sea	Red	Red	Red	Red	Red	Red	Red

4.3 Discussion text

The table summaries main findings for the assessment of MAI2021 (data from 1995-2021) on air- and waterborne inputs to the Baltic Sea and its sub-basins. In the BSAP update 2021 there where reduction requirements to fulfil MAI for total nitrogen for Baltic Proper, Gulf of Finland and Kattegat and for total phosphorus for Baltic Proper, Gulf of Finland and Gulf of Riga.

Evaluation of MAI fulfilment takes into account and includes uncertainty on inputs. Only significant changes and trends are mentioned in the table below. The mentioned reference period is 1997-2003.

For all sub-basins there is a significant decrease in airborne inputs since 1995 of 40% on average, and with 34% on average since the reference period. The average annual decrease in airborne inputs is higher during 2017-2021 as compared with 1995-2016.

HELCOM Assessment unit name (and ID)	Threshold value achieved/failed	Distinct trend between current and previous assessment	Description of outcomes, if pertinent
Bothnian Bay	Achieved for TN and TP	No changes	In 2021 estimated inputs of TN and TP were 93% and 95% of the respective MAI. In 2021 both total TN (17%) and TP (17%) inputs were lower compared with the reference period. Reduction in airborne TN inputs accounts for 31% of the total reduction in TN inputs since the reference period. There is a reduction in total TN (14%) and TP (20%) inputs since 1995. Since 2008 there is a decrease in total nitrogen inputs while TP inputs steady decreased since 1995. Waterborne TN inputs have decreased since 2008 (after increasing until 2008), while the corresponding TP inputs decrease steadily since 1995.
Bothnian Sea	Achieved for TN and TP	No changes	In 2021 estimated total inputs of TN and TP were 86% and 84% of the respective MAI. In 2021 both total TN (23%) and TP (21%) inputs were lower compared with the reference period. Reduction in airborne TN inputs accounts for 54% of the total reduction in TN inputs since the reference period. There is a reduction in total TN (23%) and TP (25%) inputs since 1995. There is a decrease in total TN inputs since 2003, inputs while TP inputs steady decreased since 1995. Waterborne TN inputs have decreased since 2003 (and no

			trend detected between 1995-2003), while the corresponding TP inputs decrease steadily since 1995.
Baltic Proper	Failed for TN and TP	No changes	In 2021 estimated total inputs of TN and TP were 124% and 183% of the respective MAI. In 2021 both total TN (9.5%) and TP (25%) inputs were lower compared with the reference period. Reduction in airborne TN inputs accounts for all the total reduction in TN inputs since the reference period. There is a reduction in total TN (24%) and TP (31%) inputs since 1995. Since 2009 there is no trend in total nitrogen inputs while TP inputs show a steady decrease since 1995. Waterborne TN inputs have increased since 2009 (18%), while the corresponding TP inputs decreased steadily since 1995.
Gulf of Finland	Failed for TN and TP	No changes	In 2021 estimated total inputs of TN and TP were 126% and 140% of the respective MAI. In 2021 for total TN no significant change was detected compared with the reference period while TP inputs were 48% lower. Airborne TN inputs were although reduced with 30% since the reference period. Reduction in airborne TN inputs accounts 100% for reduction in TN inputs since the reference period. There is no significant reduction in total TN, but TP (48%) inputs is reduced since 1995. There is no trend in total TN inputs since 2016 but input during 2017-2021, and for TP since 2012 but TN inputs in last section of 1995-2021 is higher during 2010-2016, TP inputs after 2011 is significantly lower that during 1995-2011. Waterborne TN and TP inputs show a corresponding development to their total inputs.

Gulf of Riga	For TN and TP not possible to be justified due to statistical uncertainty on inputs	No change for TN TP changes from Not achieved to Not possible to be justified due to statistical uncertainty on inputs	In 2021 estimated total inputs of TN and TP were 103% and 111% of the respective MAI. In 2021 total TP inputs were 29% lower compared with the reference period but no changes were assessed for total TN inputs. Airborne TN inputs were although reduced with 31% since the reference period. There is no reduction in total TN, but TP inputs were reduced since 1995 by 34%. Since 1995 there is no trend in total nitrogen inputs while TP inputs show a steady decrease. Waterborne TN and TP inputs show a corresponding development to their total inputs.
Danish Straits	Achieved for TN and for TP	No changes	In 2021 estimated total inputs of TN and TP were 89% and 77% of the respective MAI. In 2021 both total TN (22%) and TP (20%) inputs were lower compared with the reference period. Reduction in airborne TN inputs accounts for 56% of the total reduction in TN inputs since the reference period. There is a reduction in total TN (32%) and TP (42%) inputs since 1995. Since 2014 there is no trend in total nitrogen inputs while TP inputs show a steady decrease since 2000, but with a lower annual rate than in 1995-1999. Waterborne TN and TP inputs show a corresponding development to their total inputs.
Kattegat	Achieved for TN and TP	No changes	In 2021 estimated total inputs of TN and TP were 92% and 91% of the respective MAI. In 2021 both total TN (26%) and TP (13%) inputs were lower compared with the reference period. Reduction in airborne TN inputs accounts for 44% of the total reduction in TN inputs since the reference period. There is a reduction in total TN (32%) and TP (15%) inputs since 1995. Since 2012 there is a minor

			decrease with 6% in total TN inputs while there is no trend in total TP inputs. For waterborne TN and TP inputs there is no trend in inputs since 2011 and 2007, respectively.
Baltic Sea	Failed for TN and TP	No changes	In 2021 estimated total inputs of TN and TP were 111% and 124% of the respective MAI. In 2021 both total TN (11%) and TP (30%) inputs were lower compared with the reference period. Reduction in airborne TN inputs accounts for 71% of the total reduction in TN inputs since the reference period. There is a reduction in total TN (17%) and TP (36%) inputs since 1995. Since 2016 there is no trend in total nitrogen inputs, while TP inputs show a steady decrease since 1995. There is no trend in waterborne TN inputs since 2016, but the level is higher than the preceding 5 years, while the corresponding TP inputs decreased steadily since 1995.

TN = total nitrogen; TP = total phosphorus. Previous assessment is MAI-2020.

5 Confidence

The confidence is affected by the certainty of the quality of the nutrient input data, the trend in the inputs and the uncertainty of MAI, in relation to how far the nutrient inputs are from MAI:

The confidence of the assessment is overall high, but can be further detailed as:

- High for basins with nutrient reduction requirements: nitrogen to Kattegat, Gulf of Finland and Baltic Proper and phosphorus to the Baltic Proper, Gulf of Finland and Gulf of Riga.
- Moderate for phosphorus to Bothnian Sea and nitrogen to Danish Straits due to limitations in the MAI calculation.

6 Drivers, Activities, and Pressures

Drivers are often large and disparate concepts and thus hard to quantify as they may for example relate to broad societal changes, globalisation, political will, regulation, or consumer practices. Changes in such drivers can alter human activities and thereby result in changes in pressures. Quantifying drivers directly however is not straightforward and proxies indicative of the impact of drivers on human activities are often the only viable option. For HOLAS 3 initial work has been carried out to explore Drivers (and driver indicators) to evaluate how such information can be utilised within such management frameworks as DAPSIM. Although it is recognised as only addressing a small portion of the drivers (via proxies) of relevance for eutrophication, wastewater treatment ([Drivers and driver indicators for Wastewater Treatment](#)) and agriculture ([Drivers and driver indicators for Agricultural Nutrient Balance](#)) have been explored in these pilot studies for HOLAS 3.

Diffuse sources constitute the highest proportion of total nitrogen (nearly 50%) and total phosphorus (about 56%) inputs to the Baltic Sea (HELCOM 2022a). For total nitrogen, atmospheric deposition on the sea has the second highest share (24%) followed by natural background loads (20%) and point sources (9%). Natural background loads have the second highest share of total phosphorus inputs to the Baltic Sea (20%), followed by point sources (17%) and atmospheric deposition (7%). Point sources include activities such as municipal wastewater treatment plants, industrial plants and aquacultural plants and diffuse sources consists of natural background sources, and anthropogenic sources as agriculture, managed forestry, scattered dwellings, storm water etc.

Further developing an overview of such components and the relevant data to be able to better quantify the linkages within a causal framework provide the opportunity for more informed management decisions, for example targeting of measures, and can thereby support the achievement of Good Environmental Status. This indicator itself addresses the inputs of nutrients to the Baltic Sea (i.e. pressures) and a number of [status indicators](#) exist, thus an improved understanding of the relevant components related to drivers and activities (their data sources and how to evaluate them) can significantly improve the overall understanding of eutrophication and appropriate management of the matter.

Relevance table 2. Brief summary of relevant pressures and activities with relevance to the indicator.

	General	MSFD Annex III, Table 2a
Strong link		Substances, litter and energy - Input of nutrients – diffuse sources, point sources, atmospheric deposition
Weak link		Substances, litter and energy - Input of organic matter – diffuse sources and point sources

7 Climate change and other factors

The current knowledge on the response of nutrient inputs to climate change was included in the recent HELCOM Climate Change fact Sheet (2021). It was concluded that that river runoff is expected to be increased from the northern part of the catchment while most likely the southern catchments will be dryer. This will potentially lead to corresponding changes in loads from diffuse sources. Especially for phosphorus, effects from measures may have delayed response due to excessive storages in soils and, in some cases, lakes. Scenario simulations demonstrate that land-based nutrient management will have a greater effect on nutrient loads than greenhouse gas emissions. There are still substantial knowledge gaps, such as poor quantitative knowledge of the response of terrestrial biogeochemical processes to climate change. Another main uncertainty is how the anthropogenic drivers (and activities) will change in response to climate change and socioeconomic development.

8 Conclusions

A significant reduction of nutrient inputs has been achieved for the whole Baltic Sea. This assessment shows that the normalized total input of nitrogen² was reduced by 11% and phosphorus by 30% between the reference period (1997-2003) and 2021 (Results figure 1). In 2020 the corresponding reductions were 12% for total inputs of nitrogen and 28% for total phosphorus. The maximum allowable input (MAI) of nitrogen in this period was fulfilled in the Bothnian Bay, Bothnian Sea, Danish Straits and Kattegat (Key message figures 1 and Results tables 1a and 1b). In the Gulf of Riga the fulfilment of MAI for nitrogen cannot be judged taking into account uncertainty on inputs. MAI for phosphorus input was also fulfilled in the Bothnian Bay, Bothnian Sea, Danish Straits and Kattegat. In Gulf of Riga the fulfilment of MAI for phosphorus cannot be judged taking into account uncertainty on inputs. In the remaining sub-basins MAI was not fulfilled for either total nitrogen or for total phosphorus.

8.1 Future work or improvements needed

The indicator was extended in 2021 by assessing trends and shares of both waterborne nitrogen and phosphorus and airborne nitrogen besides the assessment of total inputs of nitrogen and phosphorus. Further comparison with every former MAI assessment is included in the indicator. In 2023 test of trends in different sections of the time series 1995-2021 whenever break points are identified is included.

The indicator assesses MAI as detailed as they are developed and adopted in the 2021 Baltic Sea Action Plan.

There is no short term need of further development of the indicator.

² Total inputs of nitrogen and phosphorus are the sum of the respective waterborne inputs (which consists of riverine inputs and direct inputs (point sources discharging directly to the sea)) and airborne inputs. Nitrogen and phosphorus inputs include all fractions of these nutrients (dissolved, particulate, inorganic and organic).

9 Methodology

9.1 Scale of assessment

Nutrient input data have been compiled in accordance with PLC guidelines for the following nine sub-basins: Bothnian Bay, Bothnian Sea, Archipelago Sea, Gulf of Finland, Gulf of Riga, Baltic Proper, Western Baltic, The Sound and Kattegat. The boundaries of the sub-basins coincide with the main terrestrial river basin catchments.

The BALTSEM model has divided the Baltic Sea into seven sub-basins in accordance with natural marine boundaries and hence the MAIs have been calculated for the following seven sub-basins: Kattegat, Danish Straits, Baltic Proper, Bothnian Sea, Bothnian Bay, Gulf of Riga and Gulf of Finland. In the BALTSEM sub-division, the Bothnian Sea includes the Archipelago Sea and the Danish Straits combine Western Baltic and The Sound.

The entire Baltic Sea is covered by the assessment.

9.2 Methodology applied

Data sources

The HELCOM Contracting Parties annually report waterborne inputs of nitrogen and phosphorus from rivers and direct point sources to Baltic Sea sub-basins. Data on atmospheric emissions and monitored atmospheric deposition are submitted by countries to the Co-operative programme for monitoring and evaluation of the long-range transmission of air pollutants in Europe (EMEP), which subsequently compiles and reports this information to HELCOM. In accordance with Recommendation 37-38-1-Rev.1 “Waterborne pollution input assessment (PLC-Water)”, sources of nutrient inputs are assessed every six years.

Nutrient input data can be viewed in HELCOM PLC reports (e.g. HELCOM 2012, HELCOM 2013d and HELCOM 2015) and in the annual Baltic Sea Environmental Facts sheet (e.g. Svendsen & Gustafsson, 2023) and from the HELCOM PLUS database.

Trend analysis and statistical processing

Annually reported data on riverine and direct inputs are quality assured and approved by national data reporters and data assurers. Assessment dataset for 1995-2021 based on the reported data was established after expert reviewing and filling data gaps in. Riverine data is flow normalized for individual rivers. Input from unmonitored areas is aggregated and normalized for sub-basins. EMEP delivered actual and weather-normalized annual nitrogen deposition data. For information about normalization of airborne and flow

normalization of waterborne input data, see chapter 10 and annex 6 of PLC guidelines (HELCOM 2022) and Larsen and Svendsen (2021).

As part of the HELCOM PLC-6, PLC-7 and MAI CART OPER projects the trend analysis was carried out by DCE, Aarhus University (Denmark), with linear regression Mann-Kendall methodology (Hirsch et al. 1982) on:

- flow normalized waterborne inputs (sum of flow normalized riverine data and direct point sources);
- normalized airborne inputs and
- total normalized inputs of nitrogen and phosphorus

for all relevant combinations of Contracting Parties and sub-basins of the Baltic Sea. Where there is a significant trend, the annual changes were determined with a Theil-Sen slope estimator (Hirsch et al., 1982). The change since 1995 and the reference period (average of 1997-2003) was calculated based on the normalized inputs. The methodology has been agreed on by HELCOM LOAD and HELCOM PRESSURE (more information on trend analysis and determining the changes in input can be found in Larsen & Svendsen 2019, and in document “Comparison of methods applied to evaluate progress towards CARTS and fulfilment of national inputs ceilings” for CART WS 1-2017).

In the indicator on inputs of nutrients (nitrogen and phosphorus) to the sub-basins 2018 (HELCOM, 2020), 2020 (HELCOM, 2022x) and in the present indicator trend analyses after screening for trend with Mann-Kendall methodology are done with linear regression, and with significant trend slope are estimated from the linear regression. Compared to the first evaluation of MAI fulfilment also a test for break points has been performed for all sub-basins of the Baltic Sea. The breakpoints were identified using an iterative statistical process as shown in Assessment Protocol table 1, which determines the most significant break points (see Larsen & Svendsen 2021). If a break point is identified, the time series is divided in two (one break point) or three segments (2 break points), and trends are tested for each segment of the series. It is tested if the trend in the segment is significant. If it is significant a slope and start value are estimated for the segment. In case of no significant trend a constant (average of the values in the segment) is used as the estimated value for the segment of the time series.

Assessment Protocol Table 1. The process for identifying breakpoints, testing for significant slopes and fitting constants (no significant slopes) and regression parameters (significant slopes) in a time series. From Larsen & Svendsen (2021).

1. step	2. step	3. step	4. step
A significant breakpoint	Test for additional breakpoints in each segment	Test for significant slopes in the segments	Fit a constant in segments with a non-significant slope. Fit regression parameters in the rest of the segments.
No breakpoint	Fit a constant for the whole time series		

The evaluation of MAI fulfilment is based on comparing MAI for each basin of the Baltic Sea with the trend estimated normalized annual total nitrogen and phosphorus inputs in 2019 including and estimated uncertainty on these inputs (Table 2) based on the most recent segment of the time series, the estimated value of the most recent year (Larsen & Svendsen 2021). In the first and second evaluation of MAI fulfilment uncertainty of average of respectively 2010-2012 and 2012-2014 normalized inputs was estimated from the variation of the three-year inputs around the average.

The testing for significant difference in the trend estimated input and inputs in the reference period (average of normalized annual inputs 1997-2003) is done by calculating 95 % confidence interval on the average normalized inputs in the reference period and the corresponding interval around the estimated inputs for the latest year (2019) inputs and testing if the two confidence intervals are statistically different (Larsen & Svendsen, 2021).

9.3 Monitoring and reporting requirements

Monitoring methodology

Waterborne inputs

Contracting Parties measure water flow and concentrations of selected parameters in riverine water and point source discharges. Estimates of inputs from unmonitored areas are based on modelling including information of point sources discharges (monitored or estimated). These data are used to calculate total annual inputs to the sea. These measurements and estimates are carried out by the Contracting Parties. The methods for monitoring and calculating waterborne pollution inputs are described in the PLC guidelines (HELCOM, 2022) last updated by PLC-8project.

An overview of agreed monitoring of nutrient inputs is also described in the HELCOM PLC guidelines (HELCOM 2022) and monitoring data are available from HELCOM PLUS database (HELCOM PLC) at http://nest.su.se/helcom_plc/.

Atmospheric inputs

Atmospheric emissions and measured atmospheric deposition are reported by countries to the Co-operative Programme for Monitoring and Evaluation of the Long-Range Transboundary Air Pollutants in Europe (EMEP), which compiles and reports to HELCOM. EMEP models the deposition of nitrogen input based on emission measurements and estimates and information on meteorological parameters. The results of the EMEP model are routinely compared to available measurements at EMEP and HELCOM stations. The deposition of phosphorus is not modelled but based on measurements from (rather few) monitoring stations, and a fixed deposition rate of 5 kg P per km² has been used in the latest PLC assessment (HELCOM 2014b; HELCOM 2015). Details of the monitoring activities and the model are available in the [HELCOM Monitoring Manual](#) for nutrient inputs from atmosphere.

Current monitoring

Waterborne inputs

Inputs from large rivers are monitored and the measurements used for calculating inputs are reported. Inputs from smaller unmonitored rivers are generally estimated by models. Inputs from point sources (municipal wastewater treatment plants, industry and aquaculture) discharging directly to the Baltic Sea are reported separately.

Monitoring table 1a. Numbers of rivers, monitored area (2020) and percentages of waterborne nitrogen inputs that were monitored, unmonitored, and direct point source discharges of total waterborne nitrogen inputs to the Baltic Sea sub-basins. (Note: Monitoring tables 1a and 1b will be updated for the final version of the indicator)

Sub-basin	Number of rivers	Monitored area (km ²)	Monitored area (% of total area)	Total N monitored (%)	Total N unmonitored (%)	Total N direct (%)
Bothnian Bay	21	234 000	88	90	4	6
Bothnian Sea	20	193 000	85	80	14	6
Baltic Proper	46	517 000	90	89	10	1
Gulf of Finland	22	402 000	96	89	1	10
Gulf of Riga	7	121 000	89	85	14	1
Danish Straits	120	14 300	52	40	55	5
Kattegat	96	77 400	88	68	29	3

Baltic Sea	332	1 559 000	89	87	10	3
-------------------	------------	------------------	-----------	-----------	-----------	----------

Monitoring table 1b. Numbers of rivers, monitored area (2020) and percentages of waterborne phosphorus inputs that were monitored, unmonitored, and direct point source discharges of total waterborne phosphorus inputs to the Baltic Sea sub-basins.

Sub-basin	Number of rivers	Monitored area (km²)	Monitored area (% of total area)	Total P monitored (%)	Total P unmonitored (%)	Total P direct (%)
Bothnian Bay	21	234 000	88	91	5	4
Bothnian Sea	20	193 000	85	80	11	9
Baltic Proper	46	517 000	90	94	3	2
Gulf of Finland	22	402 000	96	90	1	9
Gulf of Riga	7	121 000	89	87	11	2
Danish Straits	120	14 300	52	29	48	23
Kattegat	96	77 400	88	66	27	7
Baltic Sea	332	1 559 000	89	88	7	5

Monitoring tables 1a and 1b show that about 90% of the total Baltic Sea catchment area is covered by monitoring based on more than 300 monitoring stations. For six of the seven sub-basins between 85% and 96% of the catchment areas are monitored, and these catchments are covered by monitoring in mainly large rivers. For Danish Straits only about 50% of the catchment is monitored even though 120 monitoring stations or more than one third of all river monitoring stations in the Baltic Sea catchment area are situated in the catchment due to many small river catchments.

Monitoring tables 1a and 1b also show that estimated/calculated inputs from unmonitored areas constitute 10% of total nitrogen and 7% of total phosphorus waterborne inputs to the Baltic Sea.

Details of the monitoring activities are available in the [HELCOM Monitoring Manual](#) for land-based sources.

Atmospheric inputs

Details of the monitoring activities and the model are available in the [HELCOM Monitoring](#)

[Manual](#) for nutrient inputs from atmosphere and Monitoring table 2 gives an overview of the number of nitrogen monitoring stations located at the Baltic Sea used to compare model and monitored nitrogen deposition.

Monitoring table 2. Number of monitoring stations situated close to the Baltic Sea used for measuring wet and dry deposition of nitrogen compounds in 2021.

Sub-basin	Wet deposition of N	Dry deposition of N
Bothnian Bay	2	0
Bothnian Sea	2	1
Baltic Proper	6	6
Gulf of Finland	3	2
Gulf of Riga	0	0
Danish Straits	5	5
Kattegat	2	3
Baltic Sea	20	17

Description of optimal monitoring

Waterborne inputs

Guidelines for sampling discharges from point sources and inputs via rivers are given in [the PLC guidelines](#). For riverine inputs, as a minimum 12 samples should be taken each year at a frequency that appropriately reflects the expected river flow pattern. If more samples are taken (e.g. 18, 26 or more) and/or the flow pattern does not show a major annual variation the samples can be more evenly distributed during the year. Overall, for substances transported in connection with suspended solids, lower bias and better precision is obtained with higher sampling frequency.

For rivers with hydrological stations the location of these stations, measurement equipment, frequency of water level and flow (velocity) measurement should at least follow the World Meteorological Organization (WMO) Guide to Hydrological Practices ([WMO-No. 168, 2008](#)) and national quality assurance (QA) standards.

Preferably the discharge (or at least the water level) should be monitored continuously and close to where water samples for chemical analyses are taken. If the discharges are not monitored continuously the measurements must cover low, mean and high river flow rates, i.e. they should as a minimum reflect the main annual river flow pattern. Further details are provided in the PLC-6 guidelines.

Atmospheric inputs

Collection of air emission data and modelling atmospheric deposition are coordinated by EMEP. There are rather few stations located at the coast or on small islands in the Baltic Sea, and not all stations are measuring all components. Further, only some stations have long time series. Not all national monitoring stations are included in the list of "HELCOM stations" but could be used by EMEP. There are also some problems with the representativeness of the stations, i.e. rather many in the south-western part of the Baltic Sea but few in the eastern and northern parts that cause challenges when verifying the EMEP model results. For phosphorus it is especially important to establish a more extensive and representative monitoring station network, as there are no models developed to estimate the atmospheric phosphorus deposition. Thorough analysis of the monitoring data would improve the understanding of the development in the atmospheric deposition and also offer recommendations on how to improve and possibly expand monitoring.

10 Data

The data and resulting data products (e.g. tables, figures and maps) available on the indicator web page can be used freely given that it is used appropriately and the source is cited.

Data on air- and waterborne nutrient inputs from 1995 to 2021 are used in this indicator. Data reporting has not been perfect, and some few gaps exist in the dataset. For waterborne inputs, the PLC-6 project corrected suspicious data and filled in data gaps for 1995-2014 to establish a complete and consistent dataset. 2015- 2021 data has been added and assessed by BNI, Stockholm University and DCE, Aarhus University under the PLC-7 and PLC-8 projects. Gaps in time series of national air emissions have also been corrected by EMEP experts.

Data on actual (non-normalized) riverine flow as well as atmospheric and waterborne inputs of nitrogen and phosphorus are available at the link below:

[Data: Inputs of nutrients to the sub-basins - 2021 indicator version](#)

Waterborne inputs

The dataset behind the present assessment was compiled by the PLC-8 project and updated by DCE, Aarhus University and BNI, Stockholm University in cooperation with [Expert Group on Reduction Scheme Core Follow-up, EG RedCore](#).

Data on waterborne inputs, water flow and retention are reported by Contracting Parties to the PLC-Water database with reporting WEB application. The data are verified and quality assured using the PLC water database verification tools and national expert quality assurance.

There are gaps in time series of national inputs in the PLC water database. Therefore, DCE and BNI amended the dataset filling in missing and correcting suspicious data to establish an assessment dataset which then was checked and approved for use in this indicator by the Contracting Parties. A description of the methods used to fill data gaps in is given in chapter 1.2 in [BSEP 141](#) (HELCOM, 2013d) and [documentation](#) prepared by the PLC-5.5 project.

Data on water- and airborne inputs are available from 1995-2021 and cover the entire drainage basin of the Baltic Sea.

Inputs are calculated from measurements taken from monitored rivers and point sources as well as calculated estimates or modelled inputs from unmonitored areas. Quality

assurance guidelines for sample analysis are described in the PLC guidelines and intercalibration activities are carried out periodically. The most recent [intercalibration activity](#) with published results was carried out under the PLC-8 project (in Lassen & Larsen, 2021).

No official information about the uncertainty of inputs of nutrients or organic matter or flow data have been reported to HELCOM yet, but uncertainty estimates are included as a request to be reported by the Contracting Parties in the PLC guidelines. The uncertainty of annual total waterborne nitrogen and phosphorus inputs are computed for each individual sub-basin based on statistical analysis of input trends for the period 1995-2019, and examples given in Larsen & Svendsen, 2021.

Airborne inputs

Atmospheric input data for all Baltic Sea sub-basins are available for the period 1990-2021. Atmospheric transport and deposition of nitrogen compounds are used for modelling atmospheric deposition to the Baltic Sea based on official emission data reported by EMEP Contracting Parties and expert estimates. Atmospheric input and source allocation budgets of nitrogen (oxidized, reduced and total) to the Baltic Sea basins and catchments were computed using the latest version of EMEP MSC-W model. The EMEP MSC-W model is a multi-pollutant, three-dimensional Eulerian model. It takes into account processes of emission, advection, turbulent diffusion, chemical transformations, wet and dry depositions, and inflow of pollutants into the model domain. It is driven by meteorological data from the Integrated Forecast System of ECMWF (European Centre for Medium Range Weather Forecasts). A comprehensive description of the model and its applications is available on the [EMEP website](#).

Compared to the first evaluation of MAI fulfilment (Svendsen et al. 2015), in 2016 EMEP revised the modelled nitrogen air deposition to the Baltic Sea for 1995-2012. This resulted in an increase of the annual deposition to the Baltic Sea of 16 to 23%. The increase of annual nitrogen deposition to the individual sub-basins was between 9 and 27 %. In the following, the EMEP deposition model was updated after the second MAI assessment (HELCOM, 2018). The update mainly concerned changing of the deposition grid resolution from 50km*50km to 0.1°*0.1° (approx. 11km*6km grid cells in the Baltic Sea). The higher resolution was applied for computation of the annual nitrogen deposition 2000-2017, and for the present MAI assessment 1995-2021 (Gauss et al., 2023). Also, the whole time series of nitrogen emission data is updated annually, and this year emission data for 1990-1994 was also available. For years since 2000 data from FMI on ship emissions have replaced former ship emission data in the deposition calculation. The update of the model, revised

reported emission data and use of weather data in the normalization procedure (section “Airborne Inputs” under chapter “Data and updating”) resulted in markedly changed deposition data compared to the previous reporting. Deposition on the Baltic Sea in the reference period (1997-2003) was 292 000 tons nitrogen in the latest EMEP estimate, compared to 227 000 tons nitrogen previously estimated, or 29% higher than calculated for the BSAP 2013. The nitrogen deposition in the reference period showed the highest increase in the Gulf of Finland (34%) and Kattegat (38%) and the lowest in the Gulf of Riga (17%).

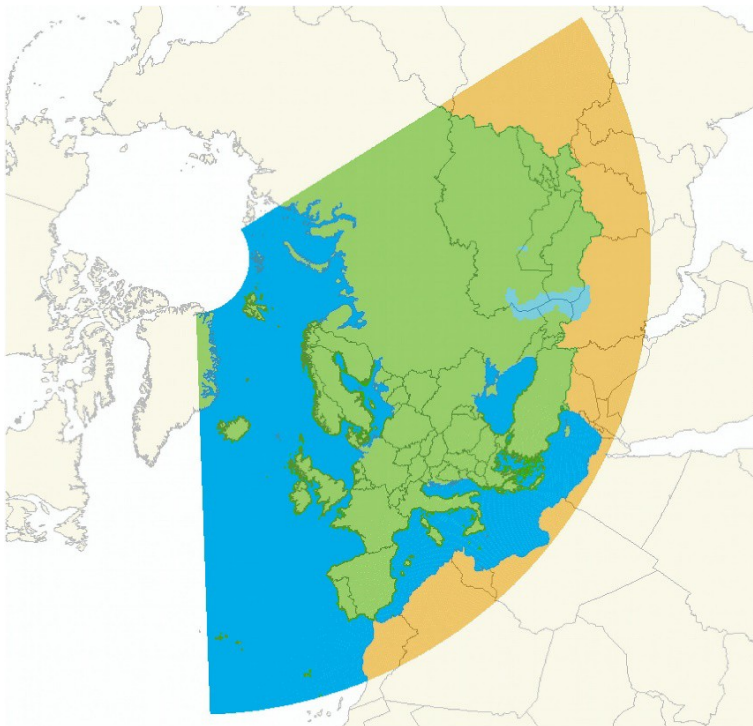
Atmospheric deposition of oxidized and reduced nitrogen was computed for the entire EMEP domain, which includes the Baltic Sea basin and its catchment (Data figure 17). Calculations are done annually on data from two years prior to the calculations. For further details see the annual report by EMEP to HELCOM (Gauss et al., 2023). Data on air emissions and atmospheric deposition are maintained by EMEP and can be accessed via the [EMEP website](#).

The results of the EMEP MSC-W model are routinely compared to available measurements at EMEP and HELCOM stations. The comparison of calculated versus measured data indicates that the model predicts the observed air concentrations of nitrogen within an accuracy of approximately 20-30%. Further work is required on reducing uncertainties in emission data and better parameterization of physical processes in the EMEP MSC-W model to increase the accuracy in future model estimates.

No official information about the uncertainty of provided nitrogen emission data have been sent to EMEP from neither EMEP nor HELCOM Contracting Parties, and consequently further work on emission uncertainty is essential. Submitted emissions data are passing through QA/QC procedures and stored in the EMEP Centre for Emission Inventories and Projections CEIP in Vienna, Austria. Reviews about the consistency, comparability and trends of national inventories are available at <http://www.ceip.at/>. There are gaps in time series of national emissions that have to be corrected by experts to make the time series complete.

There are limited data on phosphorus deposition and no emission data for the modelling work has been available for evaluation. For most countries, measurements only covered wet deposition and there was a lack of data on particulate and dry deposition. A fixed deposition rate of 5 kg P per km² to the Baltic Sea has been used in the PLC-5.5 assessment (HELCOM 2014b, HELCOM 2015). The estimates of phosphorus deposition rates are mainly based on the data from monitoring stations close to the coastline of the Baltic Sea. But there are very few monitoring stations on small islands in the Baltic Sea, and therefore the

use of the data mainly from stations on land might lead to an overestimation of deposition. Many monitored concentrations (dry and wet deposition) are very low and close to detection limit. Therefore, the atmospheric phosphorus deposition data and the applied deposition rate is rather uncertain for the whole Baltic roughly $\pm 50\%$ and for minor basins as Gulf of Riga and The Danish Straits even higher uncertainty exists. As atmospheric deposition on average only constitutes 9% of total phosphorus inputs, these uncertainties are less critical than in the case of atmospheric deposition of nitrogen, which on average constitutes about 25% of total nitrogen inputs to the Baltic Sea.



Data figure 1. The EMEP model domain used for computations on atmospheric deposition.

Arrangements for updating the indicator

Annual total waterborne inputs of nitrogen, phosphorus and their fractions are reported every year by the HELCOM Contracting Parties and compiled by the PLC Data Manager at the HELCOM Secretariat. The data collection is based on a combination of monitored data (measurements at monitoring stations close to river mouth and at point sources) and estimates of inputs from unmonitored areas.

The [HELCOM PLUS](#) is a modernized PLC database including QA facilities when uploading, and inserting data, and which allow data reports, quality assures from the Contracting Parties improved access to the waterborne input data. Further assessment dataset will be available in an assessment database under development.

Data on air emissions are reported to EMEP, which subsequently models the atmospheric deposition to the Baltic Sea. EMEP host the emission and deposition data, which can be accessed via their [website](#). EMEP is contracted by HELCOM to provide selected data products on an annual basis.

The Baltic Nest Institute (BNI), Sweden, and Danish Centre for Environment and Energy (DCE), Aarhus University, Denmark have in cooperation with [Expert Group on Reduction Scheme Core Follow-up, EG RedCore](#) elaborated the present core pressure indicator on nutrient inputs.

11 Contributors

Lars M. Svendsen¹, Bo Gustafsson², and Søren E. Larsen¹

With support from the HELCOM Expert Group on Reduction Scheme Core Follow-up, EG RedCore

¹DCE - Danish Centre for Environment and Energy, Aarhus University

²Baltic Nest Institute, Sweden

12 Archive

This version of the HELCOM core indicator report was published in 2023:

[HELCOM core indicator on inputs of nutrients for period 1995-2021 \(pdf\)](#)

Earlier versions of the core indicator:

[HELCOM core indicator on inputs of nutrients for period 1995-2020 \(pdf\)](#)

[HELCOM core indicator on inputs of nutrients for period 1995-2019 \(pdf\)](#)

[HELCOM core indicator on inputs of nutrients for period 1995-2018 \(pdf\)](#)

[HELCOM core indicator on inputs of nutrients for period 1995-2017 \(pdf\)](#)

[HELCOM core indicator on inputs of nutrients for period 1995-2016 \(pdf\)](#)

13 References

Gauss, M., Gusev, A., Aas, W., Hjellbrekke, A., Ilyin, I., Klein, H., Nyiri, A., Rozovskaya, O., Shatalov, V., Strijkina, V., Travnikov, O. 2020: Atmospheric Supply of Nitrogen, Cadmium, Lead, Mercury, PCDD/Fs, PCB-153, and B(a)P to the Baltic Sea. EMEP Centres Joint Report for HELCOM EMEP MSC-W TECHNICAL REPORT 3/2020, 126 pp.

Gauss, M. Aas, Wenche, Klein, H. and Nyiri, A. 2023: Atmospheric supply of nitrogen to the Baltic Sea in 2021. EMEP Centres Joint Report for HELCOM, Oslo September 2023, 24 pp.

Gustafsson, B.G & Mörtz, C.M. 2013: Draft scientific background on revision of the Maximum Allowable Inputs and Country Allocation Scheme of the Baltic Sea Action Plan V.4, document 2-43, HOD41-2013.

HELCOM 2022a: Assessment of sources of nutrients to the Baltic Sea in 2017. Authors: Svendsen, L.M. and Tornbjerg, H., 113 p.

HELCOM 2022: "HELCOM Guidelines for the annual and periodical compilation and reporting of waterborne pollution inputs to the Baltic Sea (PLC-Water)", 171 pp. Authors: Svendsen, L.M., Boutrup, S., Larsen, S.E., Frank-Kamenetsky, D, Gauss, M, Gustafsson, B, Haapaniemi, J, Hansson, K., Kokorite, I., Mönnich, J., Oblomkova, N., Pohl, M., Räike, A., Sokolov, A. , Sonesten, L., Tornbjerg, H.

HELCOM 2021: HELCOM Baltic Sea Action Plan – 2021 update, 60 pp.

HELCOM 2020: HELCOM Indicator manual, version 2020-1. Baltic Sea Environment Proceedings no 175, 25 pp.

HELCOM 2020: Inputs of nutrients (nitrogen and phosphorus) to the sub-basins (2018). HELCOM core indicator report. Online.

HELCOM 2022: HELCOM Recommendation 37-38-1-Rev.1 “Waterborne pollution input assessment (PLC-Water)”. Adopted 16 June 2016 and amended 7 August 2022. Supersedes HELCOM Recommendation 26/2 and HELCOM Recommendation 37-38/1.

HELCOM 2014a: Eutrophication status of the Baltic Sea 2007-2011 - A concise thematic assessment. Baltic Sea Environment Proceedings No. 143.

HELCOM 2014b: Information on atmospheric deposition of phosphorus. Document 9-3. Seventh meeting of the HELCOM Expert Group on follow-up of national progress towards reaching BSAP nutrient reduction targets (HELCOM LOAD 7-2014).

HELCOM 2013a: HELCOM Copenhagen Declaration "Taking Further Action to Implement the Baltic Sea Action Plan - Reaching Good Environmental Status for a healthy Baltic Sea". Adopted 3 October 2013.

HELCOM 2013b: [Summary report on the development of revised Maximum Allowable Inputs \(MAI\) and updated Country Allocated Reduction Targets \(CART\) of the Baltic Sea Action Plan](#). Supporting document for the 2013 HELCOM Ministerial Meeting.

HELCOM 2013c: Approaches and methods for eutrophication target setting in the Baltic Sea region. Baltic Sea Environment Proceedings No. 133.

HELCOM 2013d: Review of the Fifth Baltic Sea Pollution Load Compilation for the 2013 HELCOM Ministerial Meeting. Baltic Sea Environment Proceedings No. 141. HELCOM 2012. Fifth Baltic Sea Pollution Load Compilation – An Executive Summary. Baltic Sea Environment Proceedings No. 128A.

HELCOM 2007: HELCOM Baltic Sea Action Plan (BSAP). HELCOM Ministerial Meeting. Adopted in Krakow, Poland, 15 November 2007.

Hirsch, R.M., Slack, J.R. & Smith, R.A. 1982: Techniques of trend analysis for monthly water quality data. Water Resources Research, 18, 107-121.

Larsen, S.E. & Svendsen, L.M. 2021: [Statistical aspects in relation to Baltic Sea Pollution Load Compilation. Task under HELCOM PLC-8 project](#). Aarhus University, DCE – Danish Centre for Environment and Energy, 60 pp. Technical Report from DCE – Danish Centre for Environment and Energy No. 224.

Lassen, P. & Larsen, M.M. 2021: [Report on the HELCOM PLC-8 intercalibration](#). Aarhus University, DCE – Danish Centre for Environment and Energy, 130 pp. Technical Report No. 212.

Svendsen, L.M., Pyhälä, M., Gustafsson, B., Sonesten, L. and Knuuttila, S., 2015: Inputs of nitrogen and phosphorus to the Baltic Sea. HELCOM core indicator report. Online.

Svendsen, L.M. and Gustafsson, B. 2023: [Waterborne nitrogen and phosphorus inputs and water flow to the Baltic Sea 1995-2021](#). HELCOM Baltic Sea Environmental fact sheet, 42 p.

WMO, 2008. Guide to Hydrological Practices. Volume 1 Hydrology – From measurement to Hydrological Information. WMO No. 168, Sixth Edition, 296 p.

Ærtebjerg, G., Andersen, J.H. & Hansen, O.S. (eds.) 2003: [Nutrients and Eutrophication in Danish Marine Waters. A Challenge for Science and Management](#). National

Environmental Research Institute. 126 pp.

14 Other relevant resources

No additional information if required for this indicator.